

FLORIDA EDUCATION FUND

RESEARCH THAT IMPACTS POLICY AND PRACTICE

February 26-27, 2016

Safety Harbor Resort

105 N. Bayshore Drive, Safety Harbor, Florida 34695

Lawrence Morehouse, Ph.D.

President and CEO

Convener

Friday, February 26, 2016

12:00 P.M. ~ History Hall

REGISTRATION

1:00 - 2:20 P.M. ~ East Room

SESSION 1

Writing the Prospectus and Dissertation

- **Dr. Marvin Dawkins**, Professor, Department of Sociology, University of Miami
- **Dr. Mohsen Milani**, Executive Director, USF World Center for Strategic and Diplomatic Studies and Professor, Department of Government and International Affairs, University of South Florida

2:30 - 3:45 P.M. ~ East Room

SESSION 2

How to Prepare for the Comprehensive Exam

- **Dr. Iraida Carrion**, Associate Professor, School of Social Work, University of South Florida
- **Dr. Sylvia Thomas**, Associate Professor, Department of Electrical Engineering, University of South Florida

3:55 - 5:25 P.M.

SESSION 3

Achieving Precision, Coherence, and Clarity in Academic Writing

Business, Education, Humanities, Social Sciences ~ Phillippe A

- **Dr. Elizabeth Metzger**, Associate Professor, Department of English, University of South Florida
- **Dr. Vernetta Williams**, Assistant Professor, Department of English, University of South Florida

STEM ~ Phillippe B

- **Dr. Sylvia Holladay**, Professor (Ret.), Department of English, Hillsborough Community College

7:00 - 9:00 P.M. ~ Four Springs Ballroom

DINNER & ENTERTAINMENT

Daniel Girón & José Lao

MDF TIPS

- *Please note tips on writing for publication presented throughout the program book.*

Saturday, February 27, 2016

8:00 A.M.

REGISTRATION ~ History Hall

BREAKFAST ~ Baranoff Ballroom

8:45 - 9:05 A.M. ~ Baranoff Ballroom

OPENING SESSION

Introduction of Discussants

- **Dr. Lawrence Morehouse**, President and CEO, FEF

9:15 - 10:30 A.M. ~ Phillippe A

PANEL 1 — EDUCATION I

- **Felicia Williams**, Panel Chair, FAMU (2015), Educational Leadership

- **Zachary Collier**, UF (2015), Research Evaluation Methodology, “*Characterizing Latent Classes Using Auxiliary Variables in Mixture Item Response Theory Models: A Simulation Study of the Influence of Different Response Scales on Measurement Invariance*”

- **Deborah McEwan**, FAU (2014), Math Education, “*The Church and Critical Education of Black Males*”

- **Irenea Walker**, UCF (2015), Social Science Education, “*Factors Relating to African American Student Performance on the History End-of-Course Exam*”

Discussants (15 minutes)

- **Dr. Jonathan Gayles**, Associate Provost for Institutional Effectiveness and Associate Professor, Department of African American Studies, Georgia State University

- **Dr. Mark Howse**, Director of Academic Initiatives, Florida A&M University

- **Dr. Sonja Montas-Hunter**, Assistant Vice Provost, Office of Student Access and Success, Florida International University

Audience – Q&A (10 Minutes)

9:15 - 10:30 A.M. ~ Cypress Room

PANEL 2 — NURSING

- **Natalie Leblanc**, Panel Chair, UM (2013), Nursing

- **O. Winifred Adebayo**, UM, Nursing, “*Concept Analysis of Sexual Empowerment*”

- **Debbie Devine**, USF (2015), Nursing, “*Adolescent and Parent Knowledge of Sexually Transmitted Infections (STIs)*”

- **Esther Mathurin**, UM, Nursing, “*Disengagement in HIV Care: A Concept Analysis*”

- **Narciso Quidley-Rodriguez**, UM, Nursing, “*Sexual Decision Making and Sexual Negotiation Among Bears, A Gay Subculture*”

Discussants (15 minutes)

- **Dr. Elizabeth Baker**, Assistant Professor, College of Nursing, University of South Florida

- **Dr. Joseph De Santis**, Associate Professor, School of Nursing and Health Studies, University of Miami

Audience – Q&A (10 Minutes)

9:15 - 10:30 A.M. ~ Olympia Boardroom

PANEL 3 — COMMUNICATION SCIENCES

- **Xigrid Soto**, Panel Chair, USF (2014), Communication Sciences and Disorders, “*Children in Charge: The Effects of Using Adult Recruitment Strategies in Preschoolers’ Vocabulary Learning*”

- **Karen Bell**, USF (2015), Communication Sciences and Disorders, “*Acoustical Characteristics of Speech-Language Pathology Treatment Rooms*”

- **Karessa White**, UF (2012), Communication Sciences and Disorders, “*The Role of Nicotinamide Adenine Dinucleotide Phosphate Dehydrogenase (NADPD) in Age-Related Hearing Loss*”

Discussant (15 minutes)

- **Dr. Kenyatta Rivers**, Associate Professor, Department of Communication Sciences and Disorders, University of Central Florida

Audience – Q&A (10 Minutes)

9:15 - 10:30 A.M. ~ Phillippe B

PANEL 4 — BIOMEDICAL SCIENCE & GENETICS

- **Dorianmarie Vargas Franco**, Panel Chair, UF (2013), Bio-Genetics, “*Imprinting Setting Mechanisms at the Human Angelman/Prader-Willi Locus*”
- **Patrick Cherubin**, UCF (2014), Medical Sciences, “*The Relative Potency of a Shiga Toxin Isotype is Linked to its Quantity and Persistence in the Host Cytosol*”
- **Adonis McQueen**, USF (2014), Molecular Medicine, “*Synthesis, Characterization, and In Vitro Studies of Fluorescent 8-Aminoquinoline Molecules*”

Discussants (15 minutes)

- **Dr. Diane Allen-Gipson**, Assistant Professor, Department of Pharmaceutical Sciences, University of South Florida
- **Dr. Blanca Camoretti-Mercado**, Assistant Professor, Department of Medicine, University of South Florida
- **Dr. Sheeba Varghese Gupta**, Assistant Professor, Department of Pharmaceutical Sciences, University of South Florida
- **Dr. Zhi Tian**, Postdoctoral Scholar, University of South Florida

Audience – Q&A (10 Minutes)

9:15 - 10:30 A.M. ~ Baranoff Lobby

PANEL 5 — ENVIRONMENTAL SCIENCE & ENGINEERING

- **Ivory Council**, Panel Chair, FAMU (2013), Environmental Engineering, “*Effective Microorganisms®: Potential Applications in Radionuclide and Heavy Metal Bioremediation*”
- **Andree George**, UF (2012), Soil and Water Science, “*Contribution of Salmonella Metabolic Pathways to Proliferation in Soft Rotted Tomatoes*”
- **Krystal Pree**, FAMU (2015), Environmental Science, “*Exploring the Social, Cultural, and Health Impacts of Harmful Algal Blooms, Karenia brevis, on Personal-Use Marine Resource Harvesters in Florida*”
- **Chris Slater**, USF (2013), Environmental Engineering, “*A New Model for Vertical Seepage in Karst Lake Environments*”

Discussants (15 minutes)

- **Dr. Arindam Gan Chowdhury**, Associate Professor, Department of Civil and Environmental Engineering, and Director, Laboratory for Wind Engineering Research, Florida International University
- **Dr. Claude Villiers**, Associate Professor, Department of Civil Engineering, Florida Gulf Coast University

Audience – Q&A (10 Minutes)

9:15 - 10:30 A.M. ~ Baranoff Ballroom

PANEL 6 — NEUROSCIENCE

- **Connie Tenorio**, FSU (2014), Neuroscience
- **Lecia Brown**, USF (2015), Neuroscience, “*The Role of Tau Protein in HIV-Associated Neurocognitive Disorders*”
- **Amanda Dossat**, FSU, Neuroscience, “*Viral-Mediated Zif268 Overexpression Within the Medial Prefrontal Cortex Abrogates Gonadectomy-Induced Memory Impairments and Indices of Social Anxiety*”
- **Lindsay Elvir**, FSU, Neuroscience, “*Acute Prenatal Exposure to Valproic Acid Alters Social and Anxiety-Like Behaviors in Prairie Voles*”
- **Katie Wright**, FSU, Neuroscience, “*Methyl Supplementation Attenuates Cocaine-Seeking Behaviors and Cocaine-Induced c-Fos Activation in a DNA Methylation-Dependent Manner*”

Discussants (15 minutes)

- **Dr. Eric Bennett**, Professor & Associate Dean, College of Medicine, University of South Florida
- **Dr. Umesh Jinwal**, Assistant Professor, Department of Pharmaceutical Sciences, University of South Florida
- **Dr. Mark Kindy**, Biochemist/Neuroscientist and Professor/Associate Dean, Department of Pharmaceutical Sciences, University of South Florida, and Senior Research Career Scientist, Haley VA Medical Center
- **Dr. Daniel Lee**, Assistant Professor, Department of Pharmaceutical Sciences, University of South Florida
- **Dr. Maj-Linda Selenica**, Assistant Professor, Department of Pharmaceutical Sciences, University of South Florida

Audience – Q&A (10 Minutes)



MDF WRITING TIP

- When writing a journal article, shift gears from student to authority on your subject. Your literature review should contain essential resources, but it doesn't have to be exhaustive. Avoid too much repetition. You don't have to announce and summarize each point as in a dissertation. Include recent, relevant research; state your insights; and accept responsibility for your assertions.

Saturday, February 27, 2016

9:15 - 10:30 A.M. ~ East Room

PANEL 7 — SOCIOLOGY & CRIMINOLOGY

- **Antoinette McFarlane, Panel Chair**, UF (2013), Sociology, “*Snapshot of a Narrative: The Promotion of a Feminist Narrative on State Domestic Violence Coalition Websites*”
- **Miltonette Craig**, FSU (2013), Criminology, and **Kaleena Burkes**, FSU (2015), Criminology, “*Group Threat and Recidivism: The Relationship Between Minority Population Size and the Likelihood of Reconviction*”
- **Sherrina Lofton**, FSU (2014), Sports Management, “*The Ghost of Maurice Clarett: Future Punishment for College Football Players*”
- **Shameka Thomas**, UM (2015), Sociology, “*Contractions or Constructions: A Content Analysis of Birthing Facilities in Miami, Florida*”

Discussant (15 minutes)

- **Dr. Constance Shehan**, Professor and Chair, Department of Sociology, and Criminology & Law, University of Florida and Director, University Center for Excellence in Teaching

Audience – Q&A (10 Minutes)

10:40 - 11:55 A.M. ~ Palm Pavilion, Room 202

PANEL 8 — GEOSCIENCES

- **Maria Sider, Panel Chair**, FIU (2013), Geosciences
- **Vanessa Londono**, FIU, Geosciences, “*An Integrated Analysis Approach for Determining Depositional Environment and Age of Rock Samples*”
- **Victor Perez**, UF (2014), Geography, “*Late Miocene Chondrichthyans From Lago Bayano, Panama: Functional Diversity, Environment and Biogeography*”
- **Emmanuel Soto**, FIU, Geosciences, “*Identifying the Mineral Composition of Ash Deposits from Ocean Sediments at the Coast of Chile*”

Discussant (15 minutes)

- **Dr. Laurel Collins**, Professor, Department of Earth & Environment, Florida International University

Audience – Q&A (10 Minutes)

10:40 - 11:55 A.M. ~ Phillippe B

PANEL 9 — PUBLIC HEALTH

- **Jana Miles, Panel Chair**, FAMU (2012), Pharmacy
- **Shannon Chiles**, UM (2013), Clinical Health Psychology, “*Fruit and Vegetable Consumption Among an Ethnically Diverse Sample of Middle School-Aged Girls*”
- **Dana Farrell**, FIU (2010), Public Health, “*Risk and Protective Factors Associated with the Adult Achievement of Substance-Using Adolescents: Findings From the National Longitudinal Study of Adolescent Health*”
- **Rhoda Moise**, UM (2015), Public Health, “*Bicultural Identity Integration: How Culture Influences Health Risk and Health Promoting Behavior*”

Discussant (15 minutes)

- **Dr. Diane Allen-Gipson**, Assistant Professor, Department of Pharmaceutical Sciences, University of South Florida

Audience – Q&A (10 Minutes)

10:40 - 11:55 A.M. ~ Phillippe A

PANEL 10 — EDUCATION II

- **Jessica Wilson, Panel Chair**, USF (2014), Math Education
- **Shetay Ashford**, USF (2015), Education, “*Our Counter-Life Herstories: African American Women Ph.D.s’ Experiences in U.S. Computing Education*”
- **Natalie King**, UF (2012), Education, “*Summer STEM Programs for Black & Latino Middle School Students: An Autoethnographic Study of Black Women Directors*”

Discussants (15 minutes)

- **Dr. Jonathan Gayles**, Associate Provost for Institutional Effectiveness and Associate Professor, Department of African American Studies, Georgia State University

- **Dr. Mark Howse**, Director of Academic Initiatives, Florida A&M University

- **Dr. Sonja Montas-Hunter**, Assistant Vice Provost, Office of Student Access and Success, Florida International University

Audience – Q&A (10 minutes)

10:40 - 11:55 A.M. ~ Baranoff Lobby

PANEL 11 — PSYCHOLOGY I

- **Alejandro Diaz, Panel Chair**, FIU (2012), Psychology
- **Kevin Elliott**, FSU (2015), Neuroscience/Psychology, “*Disconnection of a Basal Ganglia Circuit in Juvenile Songbirds Attenuates the Spectral Differentiation of Song Syllables*”
- **Brianna Pankey**, FIU (2015), Psychology, “*The Role of Executive Control and Emotional Regulation in Stereotype Threat Bias*”
- **Vanessa Vieites**, FIU (2015), Psychology, “*Using Pavlovian Eyeblink Conditioning to Examine the Role of Hippocampal Function in the Development of Spatial Reorientation Abilities in Young Children*”

Discussants (15 minutes)

- **Dr. Anthony Burrow**, Assistant Professor and Director, Purpose and Identity Processes Laboratory, Cornell University
- **Dr. Brenda Wiens**, Clinical Assistant Professor, Department of Clinical and Health Psychology, University of Florida

Audience – Q&A (10 minutes)

10:40 - 11:55 A.M. ~ Cypress Room

PANEL 12 — CHEMICAL SCIENCES & ENGINEERING

- **Candice Ulmer, Panel Chair**, UF (2012), Chemistry, “*Metabolomics Approaches to Discovering the Unknown in Type 1 Diabetes*”
- **Jorge Medina**, UF (2015), Chemistry, “*2D-Electronic Spectroscopy of a Visible-Absorber with Potential for Singlet Fission*”
- **Sarah Mena**, UF (2010), Chemical Engineering, “*Acquisition of Non-Intrusive, Benchmark Experimental Data for Turbulent Two-Phase Flows Using Laser Doppler Velocimetry*”

Discussants (15 minutes)

- **Dr. Sachel Villafañe-Garcia**, Postdoctoral Scholar, University of South Florida
- **Dr. Xiaoying Xu**, Postdoctoral Scholar, University of South Florida

Audience – Q&A (10 Minutes)

10:40 - 11:55 A.M. ~ Olympia Boardroom

PANEL 13 — STATISTICS

- **Danisha Baker, Panel Chair**, FSU (2015), Statistics, “*A Bayesian Wavelet Based Analysis of Longitudinally Observed Skewed Heteroscedastic Response*”
- **Vladimir Geneus**, FSU (2015), Statistics, “*Nonparametric Change Point Detection Methods for Profile Variability*”

Discussant (15 minutes)

- **Dr. Getachew Dagne**, Professor, Department of Epidemiology and Biostatistics, University of South Florida

Audience – Q&A (10 Minutes)

10:40 - 11:55 A.M. ~ Baranoff Ballroom

PANEL 14 — ELECTRICAL ENGINEERING

- **Felix Fontan, Panel Chair**, UCF (2013), Electrical Engineering, “*Finite Rate of Innovation Approach to Hyperspectral Image Acquisition Using an Auxiliary Sensor*”
- **Allen Starke**, UF (2013), Electrical Engineering, “*A Survey and Comparison of Leading-Edge Space Networking Protocols*”
- **Victor Velez**, UCF, Electrical Engineering, “*Investigation on the Reflectance Properties on Silicon Nanowires Grown by Electroless Etching*”

Discussants (15 minutes)

- **Dr. Corey Baker**, President’s Postdoctoral Fellow, University of California, San Diego
- **Dr. Sylvia Thomas**, Associate Professor, Department of Electrical Engineering, University of South Florida

Audience – Q&A (10 Minutes)

12:00 - 1:50 P.M. ~ Four Springs Ballroom

LUNCHEON & KEYNOTE ADDRESS

- **Dr. Frank Ashley III**, Senior Advisor for Next Generation Memberships, College Board

Saturday, February 27, 2016

2:00 - 3:30 P.M. ~ Palm Pavilion, Room 202

PANEL 15 — BUSINESS: ACCOUNTING, MARKETING & MANAGEMENT

- **Nadra Pencle, Panel Chair**, UCF (2014), Accounting, “*To Herd is Human: An Experimental Look Into the Types of Information Purchasing Managers Use When Selecting a Sustainable Supplier*”
- **Daniel Pimentel**, UF (2015), Mass Communications, “*Philanthropy in Virtual Worlds: A Conceptual Model for Evaluating Purchase Intent of Cause-Related Virtual Goods in MMORPGs*”
- **Justin Hall**, FAU (2012), Business Administration, “*A Meta-Theoretical Analysis and Empirical Test of the Dual-Process Theory*”
- **Oscar Harvin**, FAU (2011), Business Administration, “*Do “Superstar” CFOs Impair Auditors’ Independence and Professional Skepticism?*”
- **Sherrina Lofton**, FSU (2014), Sports Management, “*Black Men, White Men, and Sport Media Representations of Masculinity*”

Discussant (15 minutes)

- **Dr. Shawnta Friday-Stroud**, Dean and Professor, School of Business and Industry, Florida A&M University

Audience – Q&A (10 Minutes)

2:00 - 3:30 P.M. ~ Phillippe A

PANEL 16 — BIOMEDICAL ENGINEERING

- **Zenith Acosta Torres, Panel Chair**, UM (2014), Biomedical Engineering
- **Yolanda Daza**, USF (2015), Biomedical Engineering, “*Effect of B-site Fe, Cu-doping on $La_{0.75}Sr_{0.25}CoO_3$ Perovskites for the Conversion of Carbon Dioxide to Carbon Monoxide*”
- **Dagmara Montfort**, USF (2013), Biomedical Engineering, “*Recombinant Elastin Based Nanoparticles for Targeted Gene Therapy*”
- **Tanika Williamson**, USF (2015), Biomedical Engineering, “*The Effect of HRT on IGF-1r and FOXO 3 Expression in SVK-1 Cells*”

Discussant (15 minutes)

- **Dr. Jessica Ramella-Roman**, Associate Professor and Graduate Program Director, Department of Biomedical Engineering, Florida International University

Audience – Q&A (10 Minutes)

2:00 - 3:30 P.M. ~ Phillippe B

PANEL 17 — PHYSICS & MOLECULAR BIOLOGY

- **Tommy Boykin, Panel Chair**, UCF (2014), Physics
- **Michael Cross**, USF (2015), Physics, “*Crosslink Density Dependence of Mechanical Properties in poly(N-isopropylacrylamide) Hydrogels*”
- **Dr. Rony Francois**, UF (2011), Molecular Cell Biology, “*Targeting Focal Adhesion Kinase and Resistance to mTOR Inhibition in Pancreatic Neuroendocrine Tumors*”
- **Jasmine Oliver**, USF (2013), Physics, “*Image Feature Analysis Literature Review in Lung and Esophageal Cancer*”

Discussants (15 minutes)

- **Dr. Bo Chen**, Assistant Professor, Department of Physics, University of Central Florida

- **Dr. Thomas Mareci**, Professor, Department of Biochemistry and Molecular Biology, and Affiliate Faculty, Department of Physics, University of Florida

Audience – Q&A (10 Minutes)

2:00 - 3:30 P.M. ~ Palm Pavilion, Room 203

PANEL 18 — INTERIOR DESIGN & PLANNING

- **Tiffany Lang, Panel Chair**, UF (2008), Business
- **Julie Emminger**, UF, Interior Design, “*A Case Study Exploring the Daily Learning Environment Experiences of High School Students with Attention-Deficit/Hyperactivity Disorder (ADHD)*”
- **Min-Kyoung Kim**, UF, Interior Design, “*Spatial Design Guideline for People with Autism Spectrum Disorder (ASD)*”
- **Darline Lott**, USF (2013), Geosciences, “*Base Flow Separation Using Periodic Geochemical Data*”
- **Ammar Naji**, UF, Urban & Regional Planning, “*Evaluating Smart Growth Policy Impacts Using LEED-ND Criterion: A GIS Methodology Evaluating Urban Form Historical Trends from 1960-2010 in Hillsborough County, Florida*”

Discussants (15 minutes)

- **Dr. Sophia Acord**, Acting Director of the Center for the Humanities and the Public Sphere and Lecturer, Department of Sociology and Criminology & Law, University of Florida

- **Dr. Margaret Portillo**, Professor and Chair, Department of Interior Design, and Interim Associate Dean for Research & Graduate Education, University of Florida

Audience – Q&A (10 Minutes)

2:00 - 3:30 P.M. ~ Olympia Boardroom

PANEL 19 — ECOLOGY & ANIMAL SCIENCE

- **Nia Haynes, Panel Chair**, UF (2011), Ecology
- **Eve Culbreath**, FSU (2013), Ecology, “*Under Pressure: Behavioral and Physiological Response to Predation Risk in the Least Killifish*”
- **Jason Downing**, FIU (2015), Wildlife Biology, “*Differential Impacts From an Extreme Cold Spell on Subtropical vs. Tropical Specialist Bees in Southern Florida*”
- **Veronica Negron-Perez**, UF (2013), Animal Sciences, “*Role of the Hippo Signaling Pathway in Lineage Differentiation in the Bovine Preimplantation Embryo*”

Discussant (15 minutes)

- **Dr. Emilio Bruna**, Professor, Wildlife Ecology and Conservation/Latin American Studies, University of Florida

Audience – Q&A (10 Minutes)

2:00 - 3:30 P.M. ~ Cypress Room

PANEL 20 — CHEMISTRY

- **Vanquilla Shellman Francis, Panel Chair**, FIU (2013), Chemistry, “*Optimal Headspace Extraction for the Detection of Volatile Organic Compounds (VOCs) Released From Synthetic Cathinones Using Solid Phase Micro-Extraction (SPME)*”
- **Kia Williams**, USF (2015), Chemistry, “*Zeolitic Imidazole Frameworks for Energy Applications*”

Discussants (15 minutes)

- **Dr. Sachel Villafañe-Garcia**, Postdoctoral Scholar, University of South Florida
- **Dr. Xiaoying Xu**, Postdoctoral Scholar, University of South Florida

Audience – Q&A (10 Minutes)

2:00 - 3:30 P.M. ~ East Room

PANEL 21 — COMPUTER SCIENCE

- **Troi Williams, Panel Chair**, USF (2015), Computer Science, “*Programming Idealized Robots in the Harsh Real World*”
- **Olabode Anise II**, UF, Computer Science, “*Capturing, Understanding, and Addressing Security-Related Blind Spots in Application Program Interfaces*”
- **Jerome Dunbar**, UF, Computer Science & Engineering, “*User Control in Autonomous Vehicles*”
- **Dekita Moon**, UF, Computer Science & Engineering, “*Effects of Decision Strategies for Online Shopping*”
- **Sanethia Thomas**, UF, Computer Science & Engineering, “*ScoreHigh: An ACT Prep System for Student Athletes*”

Discussants (15 minutes)

- **Dr. Ou Bai**, Assistant Professor, Department of Electrical and Computer Engineering, Florida International University
- **Dr. Wanda Eugene**, Postdoctoral Associate, College of Engineering, University of Florida
- **Dr. Patrick Roman**, Microsystems Researcher and Nanofabrication Lab Manager, Advanced Materials Engineering Research Institute, Florida International University

Audience – Q&A (10 Minutes)

2:00 - 3:30 P.M. ~ Baranoff Lobby

PANEL 22 — PSYCHOLOGY II

- **Nwakaego Ukonu, Panel Chair**, UF, Counseling Psychology, “*Acculturation and Perceived Provider Cultural Sensitivity as Factors in Treatment Adherence in a Sample of African American Adult Patients*”
- **Allyson Diggins**, UF (2013), Psychology, “*Application of the PEN-3 Model in a Physical Activity Intervention for Black Women*”
- **Marcia McNutt**, UM (2010), Psychology, “*The Role of Psychology in Addressing Racial and Ethnic Health Disparities*”

Discussants (15 minutes)

- **Dr. Anthony Burrow**, Assistant Professor and Director, Purpose and Identity Processes Laboratory, Cornell University
- **Dr. Brenda Wiens**, Clinical Assistant Professor, Department of Clinical and Health Psychology, University of Florida

Audience – Q&A (10 Minutes)

Saturday, February 27, 2016

2:00 - 3:30 P.M. ~ Baranoff Ballroom

PANEL 23 — POLITICAL SCIENCE & INTERNATIONAL RELATIONS

- **Andrea Headley**, Panel Chair, FIU (2013), Public Administration
- **Ali Bustamante**, FSU (2015), Political Science, “*Unpacking Labor Relations Reform*”
- **Maria Gonzalez**, USF, Political Science, “*The Role of Women in the Progressive Change of the Cities of Medellin and Porto Alegre*”
- **Ehsan Kashfi**, USF, Political Science, “*The Foundations of Iran’s National Identity*”
- **Alexis Mootoo**, USF, Political Science, “*From Colonial Enterprises to the United States and Brazil Today: The More Things Change, the More Things Stay the Same!*”
- **Camara Silver**, USF (2015), Political Science, “*The U.S. Response to Genocide in Rwanda: A Reassessment*”

Discussants (15 minutes)

- **Dr. Natanya Duncan**, Assistant Professor, Department of History, and Affiliate Assistant Professor, Department of Africana Studies, Lehigh University
- **Dr. Bernd Reiter**, Associate Professor and Graduate Director, Department of Government & International Affairs, University of South Florida

Audience – Q&A (10 Minutes)

3:40 - 4:00 P.M. ~ Baranoff Ballroom

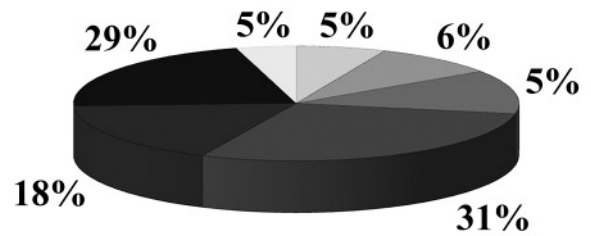
CLOSING REMARKS

- **Lawrence Morehouse**, Ph. D., President & CEO, FEF
- **Charles Jackson**, M.P.A., MDF Program Manager, FEF



MDF QUICK STATS

384 Current MDF Matriculants



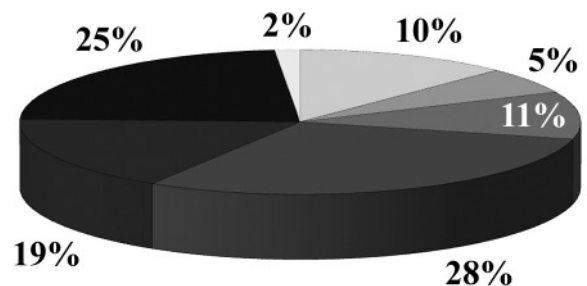
Discipline Breakdown

- Business (21)
- Education (24)
- Humanities (20)
- Social Sciences (120)
- STEM-Engineering/Computer Sciences (70)
- STEM-Health/Life/Physical Sciences (111)
- STEM-Mathematics/Statistics (18)



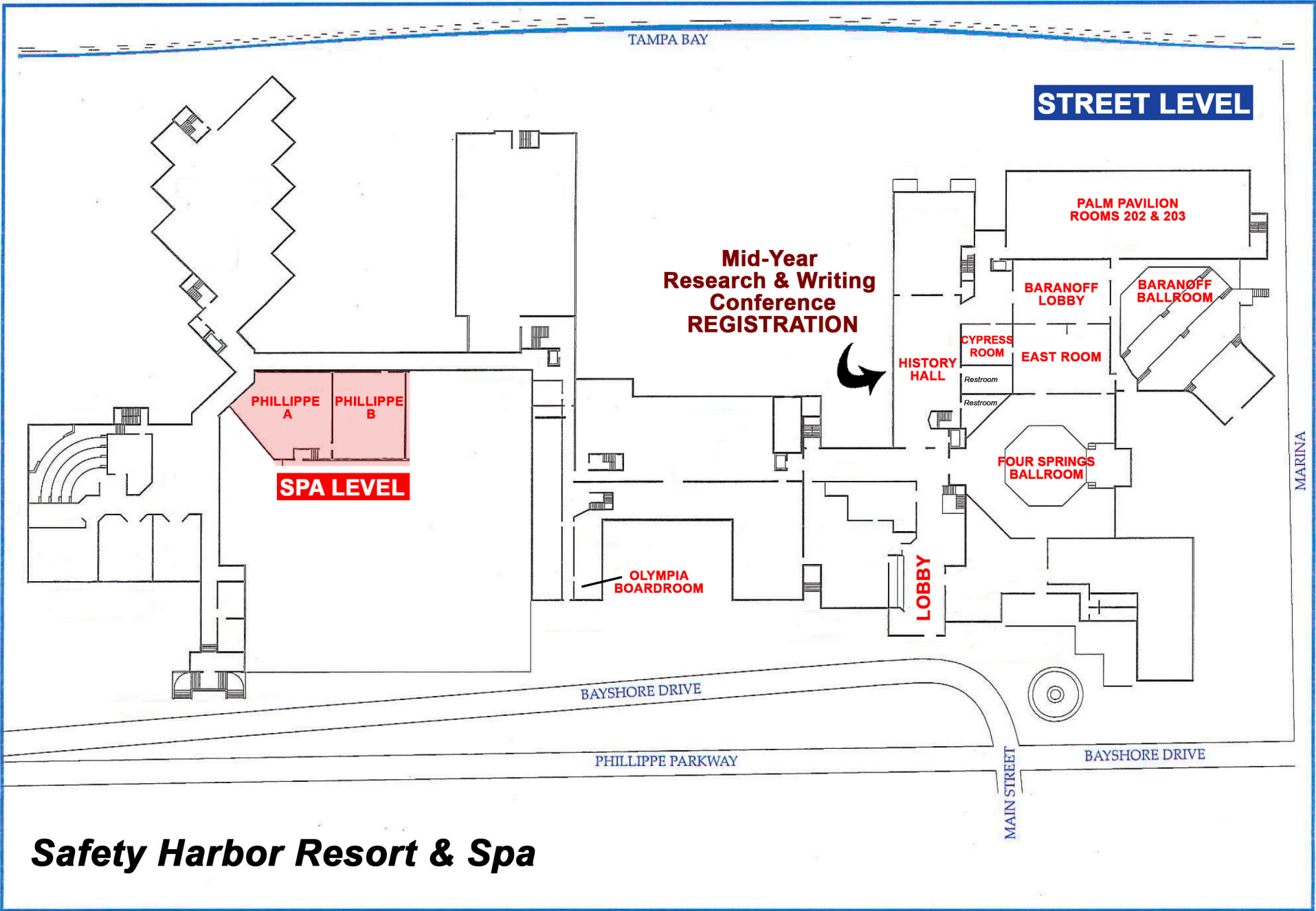
MDF QUICK STATS

510 MDF Graduates



Discipline Breakdown

- Business (53)
- Education (28)
- Humanities (56)
- Social Sciences (142)
- STEM-Engineering/Computer Sciences (97)
- STEM-Health/Life/Physical Sciences (126)
- STEM-Mathematics/Statistics (8)



Safety Harbor Resort & Spa