

*#E.F.*

**McKnight Doctoral Fellows' Orientation Meeting**

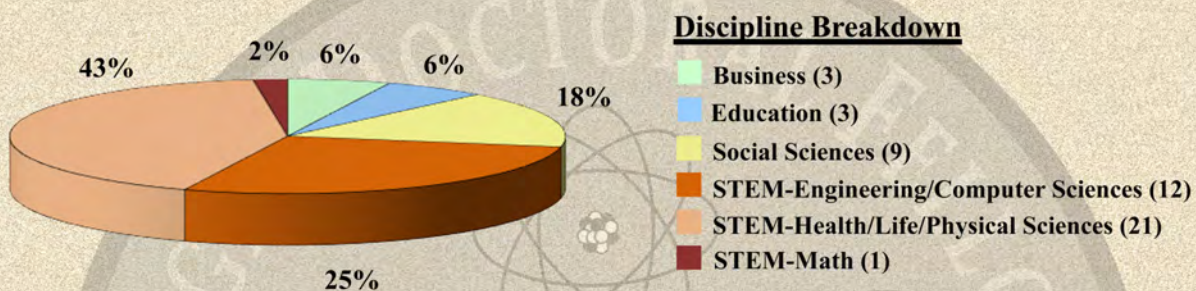
# **The PH.D. Experience: Expectations & Realities**



**June 29-30, 2018**

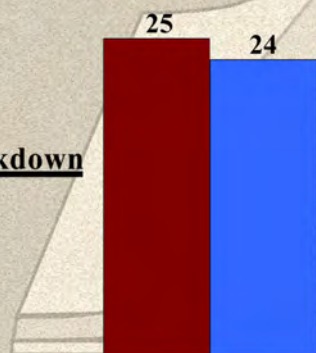


# CLASS OF 2018-2019



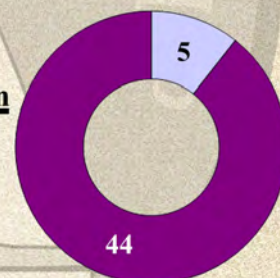
**Gender Breakdown**

Female  
Male



**Institution Breakdown**

Private  
Public



*F.E.F.*



**Florida Education Fund**  
**McKnight Doctoral Fellows' Orientation**  
*Class of 2018-2019*

---

**CONTENTS**

MDF New Fellows' Orientation Agenda	Page 2
MDF New Fellows' Profiles: Class of 2018-2019	Page 5
MDF Policy Manual	Page 14
MDF Doctoral Graduates & Statistics	Page 20

# THE PH.D. EXPERIENCE: EXPECTATIONS & REALITIES

## Agenda

**Dr. Lawrence Morehouse**, President & CEO, Presiding

*To assist you in finding meeting rooms, we include a map of the Marriott Tampa Airport Hotel on page 4.*

## FRIDAY, JUNE 29, 2018

**1:00-5:00 p.m. ~ Grand Ballroom East Foyer**

### ♦ Registration

**2:00-3:50 p.m. ~ Grand Ballroom East**

### ♦ Opening Session

*Welcome and Purpose:* - Dr. Lawrence Morehouse

*The MDF Profile: 2018-2019 Class Portraits:* - Mr. Charles Jackson, MDF Program Manager

**4:00-5:00 p.m. ~ Grand Ballroom East**

### ♦ Session I: Strategies for Navigating the Ph.D. Process: Expectations and Realities

This session surveys key academic and psycho-social requirements to successfully navigate a Ph.D. program. By examining the unique nature of doctoral studies, personal learning styles, coping mechanisms, skill sets, and the span of the doctoral commitment, students will leave the session empowered to create their own “Strategies for Navigating the Ph.D. Process.” The discussion will include information related to analytical note-taking; maintaining mental health, a strong work-ethic, and commitment; and the process of creating knowledge.

- Dr. Dovie Gamble, Retired Professor, University of Florida

**6:00-8:30 p.m. ~ Grand Ballroom West**

### McKnight Reception

*Guest Speaker:* Dr. Ruth Bahr, Associate Dean of Graduate Studies, University of South Florida

*MDF Online Writing Workshops:* Lyra Logan, Esq., Executive Vice President & General Counsel, FEF

*Closing Remarks:* Dr. Lawrence Morehouse

*Dr. Ruth Bahr is a Professor in the Department of Communication Sciences & Disorders in the College of Behavioral & Community Sciences, specializing in speech/voice production and spelling development. She edited the Routledge Handbook of Communication Disorders (published May, 2015). In addition, she is the author of numerous articles and book chapters dealing with research issues including between and within speaker variability in forensic situations, the nature of phonological representations in dialect speakers and second language learners, and patterns of misspelling in typically developing children and those with various learning disabilities. She comes to the Office of Graduate Studies having just served as Graduate Program Director for the Speech-Language Pathology program. Dr. Bahr also served for five years on the Graduate Council, including three years as Chair of the Graduate Council's Policy Committee.*



7:00-8:30 a.m.

♦ **Room Checkout**

8:00-8:45 a.m. ~ *Grand Ballroom East Foyer*

♦ **Continental Breakfast**

9:00-10:00 a.m. ~ *Grand Ballroom East*

♦ **Session II: Negotiating the Ph.D. Environment**

This presentation describes key components of the academic department at the Ph.D. level and engages new McKnight Doctoral Fellows in a discussion of strategies to develop to successfully negotiate the Ph.D. environment. The session will focus on identifying and addressing challenges faced by new doctoral students. These challenges include cultivating relations with faculty and choosing a major professor, connecting to the faculty's research enterprise, connecting coursework to research interests and dissertation development, forming committees and responding to them at various stages, and understanding the academic culture and its role in facilitating degree completion and career sponsorship.

- *Dr. Bernd Reiter*, Professor & Graduate Director, School of Interdisciplinary Global Studies, University of South Florida

10:10-12:00 p.m. ~ *Grand Ballroom East*

♦ **Graduate Deans' Roundtable**

*From the University Perspective: Best Practices for Completing the Ph.D. Program*

On this panel, selected university administrators offer their advice on the most effective practices for completing the Ph.D. program.

- *Dr. Sonja Montas-Hunter*, **Chair**, Assistant Vice Provost, Office of Student Access and Success, Florida International University

- *Dr. Ruth H. Bahr*, Associate Dean of Graduate Studies, University of South Florida

- *Dr. Henry T. Frierson*, Associate Vice President & Dean of the Graduate School, University of Florida

- *Dr. David Jackson*, Associate Provost for Graduate Education and Dean of the Graduate College, Florida A&M University

- *Dr. Jennifer Parham*, Assistant Dean, College of Graduate Studies, University of Central Florida

- *Dr. Guillermo Prado*, Dean of the Graduate School, Leonard M. Miller Professor of Public Health Sciences and Director of the Division of Prevention Science and Community Health, University of Miami Miller School of Medicine

- *Dr. Khaled Sobhan*, Professor and Interim Dean of the Graduate College, Florida Atlantic University

- *Dr. Adrienne P. Stephenson*, Assistant Dean & Director, Graduate Fellowships & Awards, Florida State University

12:10-1:30 p.m. ~ *Grand Ballroom West*

♦ **Luncheon and Keynote Address: Student Success and the Ph.D. Experience**

- *Dr. Frank Ashley III*, Senior Associate Dean and Senior Professor, Bush School of Government and Public Service, Texas A&M University

*Dr. Frank Ashley III is currently Senior Associate Dean and Senior Professor at the Bush School of Government and Public Service, Texas A&M University. He has been an educator for more than 40 years. After receiving his master's degree from the University of Alabama, he taught and coached at Louisiana College (his alma mater) for six years. Upon earning his doctorate from the University of Alabama, he joined the faculty at Texas A&M University and continued to work in the A&M University System for 26 years in many roles, including division chair, associate dean, director of admissions, dean, and interim provost/vice president for academic and student affairs. In 2007, Ashley became Vice Chancellor for Academic Affairs for the A&M System and, in 2011, Vice Chancellor for Recruitment and Diversity. He left this position in 2013 to become Senior Vice President for Membership and Higher Education and later the Senior Advisor for Next Generation Membership with the College Board Corporation in New York. Dr. Ashley has presented nationally and abroad and has authored over 100 publications and presentations. He has generated over \$12,300,000 in grant funds and is active in many professional organizations. His numerous awards and honors include distinguished alumnus, distinguished teaching, teacher of the year, and citizen of the year.*



**1:45-3:00 p.m.**

## ♦ **Introduction to Graduate Writing**

Writing in graduate school presents a number of opportunities and challenges. This session addresses a variety of types of writing students will experience in graduate school, including book reviews, critiques, literature reviews, annotated bibliographies, research papers and proposals, among others. In addition, the session addresses the need for students to familiarize themselves with scholarly journals in their fields, along with writing styles and documentation specific to their disciplines. The session also identifies typical writing problems that occur in students' writing and provides references to remedy the weaknesses.

## **BUSINESS, EDUCATION, HUMANITIES, SOCIAL SCIENCES ~ *Collier Room***

- *Dr. Elizabeth Metzger*, Associate Professor, Department of English, University of South Florida

- *Dr. Vernetta Williams*, Assistant Professor, Department of English, University of South Florida

## **STEM ~ *Sarasota Room***

- *Dr. Sylvia Holladay*, Visiting Professor, Department of English, University of South Florida

**3:10-4:20 p.m. ~ *Grand Ballroom East***

## ♦ **MDF Panel: The University Experience**

The McKnight Doctoral Fellows' Panel has long been a New Fellows' Orientation highlight. Matriculating Fellows share their experiences and insights on selected topics to help prepare new Fellows for their upcoming Ph.D. experiences.

- *Dr. John Gibson*, (Electrical Engineering, FIU): "*Hard Work Pays Off, so Quit Complaining*"

- *Ms. Shamara Collins* (2013, Electrical Engineering, USF): "*The First 18 Months of the Ph.D. Program*"

- *Mr. Jorge Hernandez* (2016, Criminology, FSU): "*Make Time for Things That Matter*"

- *Ms. Dorianmarie Vargas* (2013, Genetics, UF): "*Balancing Graduate School Workload with Personal and Family Commitments*"

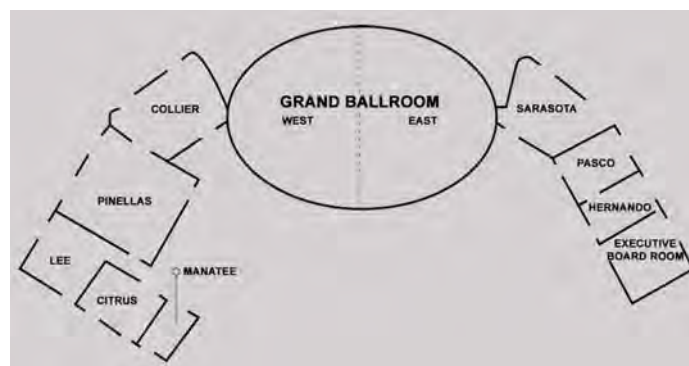
**4:30-5:00 p.m. ~ *Grand Ballroom East***

## ♦ **Closing Session**

*Business Matters/Policies & Procedures*

*Meeting Adjournment*

## **MARRIOTT TAMPA AIRPORT HOTEL**

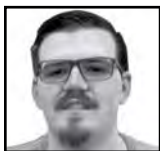


LOBBY LEVEL

# MDF NEW FELLOWS' PROFILES: CLASS OF 2018-2019

## ***Alexander Acosta***

Chemistry, Florida International University



B.S., Chemistry, University of New Haven  
B.S., Forensic Science, University of New Haven

### **Research Interest**

Alexander's research focuses on applying chemical practices to crime scene investigations. His goal is to advance or develop chemical methodologies that allow a crime scene investigator to identify drugs or explosive material directly at the scene. This research will allow investigators to confirm existence of these substances quickly, rather than having to wait hours or days for results from a lab.

## ***Michael Adeyosoye***

Electrical & Computer Eng., Florida International University



B.S., Computer Science, Kennesaw State University  
M.S., Computer Science, Florida International University

### **Research Interest**

Michael researches cardiovascular risk detection. His goal is to develop a device that will accurately determine the amount of inflammation in the arteries, which in turn could precisely indicate a person's cardiovascular risk. This research will benefit society by raising heart health awareness and, as a result, drastically reduce the number of deaths caused by heart disease.

## ***Trenton Aguilar***

Fisheries and Aquatic Sciences, University of Florida



B.S., Ecology, University of Arizona  
B.S., Evolutionary Biology, University of Arizona

### **Research Interest**

Trenton studies sea turtles off the coast of Florida and examines how human influences affect them. He hopes to elucidate meaningful impacts on the turtles' natural life cycles and determine whether they are adapting sufficiently to their rapidly changing environment. This research will help manage and conserve these species in the future.

## ***Johann Alvarez***

Physics, University of Florida



B.S., Physics, Florida International University

### **Research Interest**

Johann researches the properties of semi-conductors at the microscopic level. By studying how certain materials react to magnetic fields, electric fields, heat, and other variables, he plans to develop new ways to improve current nanotechnology. Advancements in this field will benefit everyone reliant on technology, by developing new devices that are more reliable and efficient.

## ***Erica Anderson***

Behavioral and Community Sciences  
University of South Florida



B.S., Psychology, University of Tampa  
M.S., Counseling Psychology, Bethune-Cookman University

### **Research Interest**

Erica researches minority mental health and health disparities with a focus on women's behavioral health and chronic disease co-morbidity. Her goal is to reduce the stigma of mental health in minority communities and the biopsychosocial burden associated with minority health disparities. This research supports the movement towards achieving health equity and improving overall health-related quality of life for minority populations.

## ***Brandon Applewhite***

Biomedical Engineering, University of Miami



B.S., Chemical Engineering, University of South Florida

### **Research Interest**

Brandon researches the use of biomaterials for tissue engineering applications. His goal is to develop novel treatment strategies in regenerative medicine that can easily transfer to everyday patient care. This research will benefit society by finding a solution to the donor organ shortage crisis and establishing a new standard of care for conditions like paralysis, Alzheimer's, and organ failure.



***Herman Autore***  
Statistics, Florida State University



B.A., Chemistry, Florida International University  
M.S., Statistics, Florida State University

**Research Interest**

Herman uses math to help solve questions in biology and uses machine learning to teach computers to read thousands of research papers. His algorithm then finds patterns in what it reads and tells scientists possible new discoveries. This research will benefit science by allowing scientists to refocus time they currently spend reading to creating cures and inventions.

***James Brown***  
Neuroscience, Florida State University



B.A., Psychology, Morehouse College  
M.S., Experimental Psychology, St. Joseph's University

**Research Interest**

James researches the neuroendocrine system as it relates to social behavior and stress in monogamous mammals. This research will benefit society by helping to uncover possible gender differences in both normal and abnormal behaviors. One of his goals is to better understand ethologically-relevant models of maladaptive behavior in rodents.

***Brandi Cook***  
Chemistry, University of South Florida



B.S., Microbiology, University of Montana  
B.S., Cellular and Molecular Biology, University of Montana  
M.S., Cellular and Molecular Biology, University of South Florida

**Research Interest**

In order to better define the origin of life, we need to determine how the biochemical make-up of living organisms initiated and became preferentially composed of L-chiral amino acids and D-carbohydrates. Brandi's research aims to determine the evolution of dominant chirality of biological amino acids using molecular dynamic-based software systems for modeling organic and bioorganic molecular reactions.

***Ke Aira Davis***  
Molecular Microbiology, University of Florida



B.S., Biology, Clark Atlanta University  
M.S., Biology/Microbiology, Alabama A&M University

**Research Interest**

Ke Aira's research focuses on fungal pathogenesis and how cell biology of intracellular pathogens interact. She also will study immunology and parasitology, since these are important aspects of pathogenesis.

***Nella Delva***  
Biomedical Science, Florida State University



B.S., Biology, Barry University  
M.S., Biological Science, University of South Carolina

**Research Interest**

Nella researches chronic diseases, particularly cancer, and currently works with targeted Alpha-Particle Therapy for treatment of Uveal melanoma. Her goal is to find better biological targets to develop more specific therapeutic agents that would treat cancer and other chronic diseases more efficiently.

***Antonio Diaz***  
Mechanical and Aerospace Engineering  
University of Florida



B.S., Aerospace Engineering, University of Florida  
B.S., Mechanical Engineering, University of Florida

M.S., Aerospace, University of Florida

**Research Interest**

Tony is interested in aerothermal and solid mechanics interfaces and plans to investigate these subjects using iterations of the experimental process and computer modeling. The scientific community and public will benefit from the dissemination and application of the conclusions drawn from his research.



## ***Shante Earle***

Dietetics and Nutrition, Florida International University



B.S., Health Sciences, University of South Florida

M.S., Dietetics and Nutrition, Florida International University

### **Research Interest**

Shante's research interest is in community nutrition relating to minority children and adolescents. Her goal is to develop community-based interventions using nutrition education that will aide in chronic disease prevention. This research will improve dietary consumption and behavior change by increasing the availability and accessibility of food among minority populations.

## ***Pedro Espina***

Computer Science, Florida International University



B.S., Physics, Florida International University

B.S., Mathematics, Florida International University

M.S., Mathematics, Florida International University

### **Research Interest**

Pedro's research interest is in machine learning and artificial intelligence. His goal is to apply new and existing techniques to help improve supercomputers performance. The benefit to society is the ability to process more effectively the overwhelming amount of data produced at high rates today in areas such as education and healthcare.

## ***Leah Davis Ewart***

Prevention Science and Community Health  
University of Miami



B.A., History, Florida International University

M.P.H., Public Health, Florida International University

### **Research Interest**

Leah researches HIV prevention methods for Black women in South Florida to address health disparities and inequities. Her goal is to develop, implement, and evaluate evidence-based and community-based HIV prevention programming for Black women. This research will benefit society by helping to decrease the spread of HIV and by addressing issues in South Florida that have created health inequities, affected families, and negatively impacted the Black community.

## ***Tienna Fenton***

Public Health, Florida International University



B.S., Biology, Florida A&M University

### **Research Interest**

Tienna will research both chronic and infectious disease rates in healthcare facilities. Her goal is to increase patient safety while in the care of health care professionals. Her research will help develop programs for clinicians and healthcare facilities to reduce disease acquisition and transmission in hospitals as well as in patients' daily lives.

## ***Lindsay Fields***

Economics, University of South Florida



B.S., Mathematical Sciences, Florida A&M University

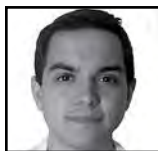
M.A., Pure and Applied Mathematics, University of South Florida

### **Research Interest**

Lindsay is a game theorist with experience in mathematics, economics, and physical sciences. Her master's thesis developed a model to predict compulsivity in individuals with obsessive-compulsive disorder, and the network of automata she designed simulates a self-perpetuating cycle of compulsive behavior. Lindsay's new research goals are to determine the margin by which single-parents' decisions impact their children's future income potential.

## ***Eric Fonseca***

Materials Science and Engineering, University of Florida



B.S., Chemical Engineering, University of South Florida

### **Research Interest**

Eric's research goals focus on computational methods for materials discovery. He will use machine learning and genetic algorithms in an effort to optimize the discovery of novel materials for batteries and photocatalysts, which is currently an exhausting process. This optimization will increase the rate at which green energy materials are developed, as well as the effectiveness of these materials in combating climate change.

### ***Vidia Gokool***

Chemistry, Florida International University



B.S., Chemistry, Florida International University

#### **Research Interest**

Vidia has conducted research in multiple fields of forensic science. She has worked with footwear analysis and trace elemental analysis. Her goal is to develop new sample detection and collection methods for police use. This research will advance society by providing additional and improved forensic analysis techniques to law enforcement, investigators, and evidence analysts.

### ***Brittany Gonzalez***

Biomedical Engineering, Florida International University



B.S., Biomedical Engineering, Georgia Institute of Technology

#### **Research Interest**

Brittany researches congenital heart valve defects and tissue engineering applications. Her goal is to determine a more effective treatment strategy for valve replacement in children with congenital heart valve defects. This research will benefit society by reducing the number of reoperations on pediatric patients with valve replacements, lowering medical costs.

### ***Savannah Hartman***

Marine Science, University of South Florida



B.A., Biology, University of Virginia

B.A., Anthropology, University of Virginia

#### **Research Interest**

Savannah researches fish community dynamics in Venezuela's Cariaco Basin. Her goal is to use fish scale records and sea surface temperatures to demonstrate that changes in fish communities and their abundance through time may indicate climate change. This research will benefit society by elucidating how economically and environmentally important fisheries are impacted not only by overfishing but by a changing climate.

### ***Jasmine Haynes***

Public Affairs/Social Work

University of Central Florida



B.A., Sociology, Spelman College

M.S.W., Social Work, Florida State University

#### **Research Interest**

Jasmine's research focuses on Social and Emotional Learning (SEL), and her goal is to study and/or develop evidence based SEL interventions to help young adults grow skillsets to be successful and productive members of society. Further emphasizing SEL with young adults can potentially improve academic/career outcomes and mental health well-being and decrease risky behaviors among this population.

### ***Alejandro Hernandez***

Chemistry, Florida International University



B.A., Chemistry, Florida International University

#### **Research Interest**

Alejandro researches new sources of radio-analytical reference materials necessary to provide high-quality data to accurately assess the consequences of domestic or international nuclear events (e.g., neptunium-236). His goal is to develop new and innovative methodologies capable of delivering a source of this reference material. This research will result in publications that support significant advances in other fields of actinide science.

### ***Joseph Jefferson***

Civil/Coastal Engineering, University of Florida



B.C.E., Civil Engineering, University of Delaware

#### **Research Interest**

Joseph will research in the field of coastal engineering. His efforts will focus in the areas of non-linear wave theory, and he intends to use his knowledge to elucidate how meteo-tsunamis are formed and develop strategies for anticipating and reducing their impact.

## ***Christopher Kay***

Philosophy of Nursing, University of Miami



B.A., Biology, Lehman College  
B.S., Nursing, Lehman College  
M.S., Nursing, Long Island University

### **Research Interest**

Christopher researches the transgender experience in health-care, from adolescence to adult years. His goal is to increase knowledge and awareness when it comes to providing medical care to transgender individuals of all ages. This will benefit society by creating a safe atmosphere in which medical care can be sought without judgment, decreasing the potential for HIV and other communicable diseases to exist without diagnosis and treatment.

## ***Roxanne Lawrence***

Industrial and Organizational Psychology  
University of South Florida



B.S., Psychology, University of Miami

### **Research Interest**

Roxanne's research focuses on the cultural differences in workplace stress and work-family conflict. Her goal is to develop ways to create balance between work and family life. This research will bring awareness to how culture influences the choice of work or family, inform individuals about how to reduce workplace stress, and foster better work and family relationships.

## ***Mario Lewis***

Higher Education Administration  
Florida International University



B.A., English Studies, Florida State University  
M.S., Higher Education Administration, Florida International University

### **Research Interest**

Mario's goal is to address problems faced by students of color who are advancing in their post-secondary studies and to explore why such problems are prevalent among minority students in institutions whose populations are largely minority. His research will inform efforts designed to develop environments more conducive to successful post-secondary matriculation.

## ***Motomori Lewis***

Pharmaceutical Sciences, University of Florida



B.S., Biomedical Sciences, University of South Florida

B.S., Public Health, University of South Florida

### **Research Interest**

Motomori researches pharmaceutical outcomes and policy. Her goal is to examine patient care outcomes to improve the quality of health care services, especially in minority populations. This research benefits society by enhancing the patient safety of medications and improving the effectiveness of the healthcare system.

## ***Keith McNamara, Jr.***

Human Centered Computing, University of Florida



B.S., Computer Science, University of Maryland

### **Research Interest**

Keith researches artificial intelligence, more specifically, learning transfer across different environments. His goal is to develop better methods of human-technology interaction in automated processes. This research will benefit society by providing more avenues for employment and alleviating concerns about machinery and software taking over various jobs.

## ***Heidy Medina***

Epidemiology, University of Miami



B.S., Biology, University of Miami

B.S., Psychology, University of Miami

M.P.H., Public Health, University of Miami

### **Research Interest**

Heidy researches trends in the causes, prevention, and control of cancer. Her goal is to use epidemiological methods to identify health disparities present amongst cancer survivors and their effect on quality of life. This research will benefit society by providing health professionals with more insights into follow-up care and increasing patient healthcare advocacy. Her passion is to work with pediatric cancer survivorship programs.



### ***Emanuel Garcia Munoz***

Economics, University of Florida



B.A., Economics, Florida Gulf Coast University

B.A., English, Florida Gulf Coast University

#### **Research Interest**

Emanuel researches issues in public economics. He is chiefly concerned with the interaction between government policy and discrimination, education, and social welfare systems. His goal is to develop new tools to effectively analyze the cost and effects of public policy. This research will hopefully refine the crafting of policy and thereby improve the lives of those affected by these laws.

### ***David Perez***

Civil Engineering, Florida A&M University



B.S., Environmental Engineering, Florida State University

#### **Research Interest**

David's research focuses on environmental issues such as water allocation, wastewater treatment, and assessing private industry environmental performance. Currently, he is working on quantifying the adsorption capabilities of zero-valent iron (ZVI) and ZVI bimetallic substrates on aqueous chemical warfare agent surrogates. David believes proper management of current water disputes can serve as a blueprint for current and future shared water boundary conflicts.

### ***Nikema Peterson***

Pharmaceutical Sciences, Florida A&M University



B.S., Sociology, Florida State University

M.P.H., Public Health, Florida A&M University

#### **Research Interest**

Nikema's research interests include health equity, health disparities, and maternal/child health. She plans to study factors that impact health care access, outcomes, and overall experience and is passionate about eliminating health inequities experienced by minorities through research and intervention. Her research will lay strong foundations for implementing future population-based health intervention programs and improving health policy.

### ***Mario Renato Cavani Quevedo***

Government, University of South Florida



B.A., Foreign Language Education/French Culture & Literature, University of South Florida

#### **Research Interest**

The overarching goal of Mario's research is to empower the indigenous Quechuan culture of the Peruvian Andes. Peruvian society tends to value the Quechua people as tourist attractions rather than as people whose world view includes admirable characteristics, such as an emphasis on women's rights and reciprocity, often missing from the dominant culture. Mario's research seeks to influence government policies and to encourage both Spanish-speaking and Quechua society to study and value Quechua epistemology.

### ***Rodrigo Ramon***

Electrical and Computer Engineering  
Florida International University



B.S., Electrical Engineering, Florida International University

M.S., Electrical Engineering, Florida International University

#### **Research Interest**

Rodrigo researches electromyography signals and their resulting forces and movements. His goal is to develop an exoskeleton to aid in neurological rehabilitation interventions used with stroke and spinal cord injury patients. His research will lead to an empirically-based rehabilitation methodology to assure that assisted movements are based on muscular activity.

### ***Darlene Ramos***

Biomedical Sciences, University of Central Florida



B.S., Biological Science, Florida International University

#### **Research Interest**

Darlene previously researched cortical spreading depression with an aim to better understand how it propagated in the cortex. This research led her to study neurodegenerative brain disorders. She is currently interested in understanding the mechanisms by which certain neurodegenerative disorders deteriorate the brain. Her research will hopefully enhance the quality of life of affected individuals and provide new insights on how to treat the diseases.

## ***Valeria Rigobon***

Developmental Psychology, Florida State University



B.S., Psychology, Florida State University

### **Research Interest**

Valeria conducts research on dyslexia and other reading/learning difficulties. She aims to develop a collaborative project with FSU's music department to investigate how music may aid in word reading among elementary-age children. This research could potentially contribute to teaching practices and remediation strategies that focus on providing extra support for children who demonstrate early reading struggles.

## ***Gerson Sanchez***

Higher Education, Florida International University



B.A., Communication Studies, University of North Carolina

M.S., Higher Education Administration, Florida International University

### **Research Interest**

Gerson will research how power operates within structures of education, specifically as pertains to race and racism. His goal is to pursue a career as a professor of higher education, and his research will benefit communities that have been disenfranchised by increasing their awareness and access.

## ***William Sims***

Computer Science, University of Florida



B.S., Mathematics, University of North Florida

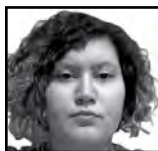
B.S., Computer Science, University of North Florida

### **Research Interest**

William researches computational geometry and computer theory, and his goal is to prove theorems and develop efficient algorithms. This research will benefit society by laying the foundation in theory that will advance computer science and all related fields. It will also directly affect industry by providing new algorithms and geometric simulations to fields such as engineering and biology.

## ***Robin Stubbs***

Biology, Florida International University



B.S., Biology, University of Texas

M.S., Forensic Science, Florida International University

### **Research Interest**

Robin studies human microbiomes in decomposition. Her focus is to document functional gene changes in the microbial communities to determine if a pattern is distinguishable and can be used as a marker of post-mortem interval. This research will benefit forensic science and criminal investigations by helping to create a more accurate time since death, narrowing the margin of error.

## ***Michelle Tall***

Nursing, University of Central Florida



B.A., Psychology, Rollins College

M.S.N., Nursing, University of Central Florida

### **Research Interest**

Michelle's research focuses on the effects of cultural attitudes on childhood epilepsy. Her goal is to construct culturally-sensitive models and strategies that can be implemented in the healthcare and educational sectors. She expects her research to help decrease the stigma of disease, improve family and provider relationships, and increase access to quality healthcare and education.

## ***Nicole Fernández Tejero***

Chemistry, Florida International University



B.S., Chemistry, University of Puerto Rico

### **Research Interest**

Nicole's undergraduate research focused on the isolation and structure elucidation of the marine sponge *Tethya crypta*. She now would like to redirect her focus to research that combines biochemistry, analytical chemistry and forensics to develop scientific approaches to solving complex forensic problems.

## ***LaRaven Temoney***

American Politics and Public Policy, University of Florida



B.B.A., Business Administration, Winthrop University

### **Research Interest**

LaRaven researches issues in education policy and the effects policy can have on economic inequality. Her goal is to develop and refine policies to allow students from all walks of life to have equal educational opportunities. This research will benefit society by helping to increase the percentage of the population that pursues higher education, which will lead to better life decisions and overall quality of life.

## ***Janae Thomas***

Government, University of South Florida



B.S., Finance, Florida State University  
B.S., Real Estate, Florida State University  
B.S., Insurance, Florida State University  
M.B.A., Business Adm., University of Florida  
M.P.A., Public Health, University of South Florida

### **Research Interest**

Janae researches disparate treatment throughout the criminal justice system. Her goal is to develop and refine regulations to address injustices throughout the various stages of the criminal justice process. This research will benefit society by helping to equalize all individuals within the criminal justice system, thereby reducing recidivism rates and lowering the costs of incarceration.

## ***Umelo Ugwoaba***

Clinical and Health Psychology, University of Florida



B.S., Psychology, University of Washington - Seattle

### **Research Interest**

Umelo researches obesity and weight management, with a secondary interest in addiction and addictive behaviors. While addressing the leading preventable causes of death, his research will explore the decision-making processes behind adverse health outcomes. This research will aid practitioners in the implementation of programs that improve these health outcomes at the individual and community level.

## ***Caroline Velez***

Chemistry, University of Miami



B.S., Chemistry, Adelphi University

### **Research Interest**

Caroline's research focuses on the free energy of siRNA duplexes involved in RNAi pathways with different 3' overhangs, specifically using VMD and AMBER14 programs such as Leap and MMPBSA.py. Her future research will study the interactions of other biological systems with the goal of developing a fundamental understanding of those systems and drug design.

## ***Dieff Vital***

Electrical Engineering, Florida International University



B.S., Multifunctional Materials, Florida Polytechnic University

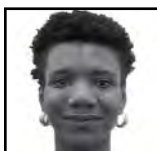
M.S., RF Communication, Florida International University

### **Research Interest**

Dieff researches textile-based RF power harvesters for low-input wearable electronic applications. His goal is to develop low-cost textile-based large-area RF power harvesters that can be used to power low-power devices and biosensors. This technology will help the community by eliminating the dependence on batteries to power wearable devices used in healthcare and fitness monitoring/tracking, defense, automotive, home security, space, and other arenas.

## ***Dionne Wilson***

Curriculum and Instruction in Science Education  
Florida State University



B.S., Marine Biology, Texas A&M University

### **Research Interest**

Dionne researches science identity development and its links to community-based pro-environmental behaviors in minority children. Her goals are to develop teaching methods that promote productive environmental discussions to empower students to take action within their communities. This research will promote opportunities for students to participate in conservation efforts, positively affecting their STEM trajectories and encouraging greater diversity in STEM fields.



## ***Michael Zarate***

Economics, Florida International University



B.A., Economics, Florida International University

### **Research Interest**

Michael researches economic development and growth with a primary focus on alleviating poverty and fostering economic growth. His research will ultimately help countries grow their economies, reduce recessions and depressions, and eradicate poverty and will aid governments in developing and implementing effective economic policy.

McKnight Fellows & Graduates,  
keep your information up to date in the MDF Directory.

Visit [www.fefonline.org/dir](http://www.fefonline.org/dir)

# THE MCKNIGHT DOCTORAL FELLOWSHIP PROGRAM

---

*THE THIRD DECADE OF EXCELLENCE*



## 2018 NEW FELLOWS' POLICY MANUAL

# HISTORICAL OVERVIEW OF THE FLORIDA EDUCATION FUND

The Florida Education Fund (FEF) was funded initially by a major grant from the McKnight Foundation of Minneapolis, Minnesota, and, subsequently, by a challenge grant from the Foundation, which required matching funds from the State of Florida. As a not-for-profit corporation established in 1984, the FEF has provided a means of ensuring educational opportunities for historically underrepresented individuals. This quasi-public entity, with a statewide mission and national impact, was originally known as the McKnight Programs in Higher Education. In its early years, FEF was administered by the Florida Association of Colleges and Universities, which served as the forerunner to the FEF.

## FLORIDA EDUCATION FUND PROGRAMS

***McKnight Doctoral Fellowship.*** The program increases the pool of minorities with Ph.D.'s in an effort to diversify college and university faculty. As partner and facilitator, the FEF works with doctoral degree-granting universities to recruit, retain and graduate students pursuing Ph.D.'s. Each year, the FEF awards up to 50 Fellowships. Since 1984, the FEF has awarded 1215 Fellowships, and 660 Fellows have received their Ph.D.'s. A total of 382 Fellows are currently matriculating, with the FEF maintaining an outstanding retention rate of 86 percent.

***McKnight Junior Faculty Development Fellowship.*** The program encourages excellence in teaching and research by women, African Americans, Hispanics, and Native Americans. To date, the FEF has awarded 226 Fellowships. At least 40 Fellows have obtained tenure, 37 Fellows have completed their doctoral degrees, and 37 Fellows have earned promotions.

***Centers of Excellence.*** The program identifies and motivates historically disadvantaged elementary and secondary students to subscribe to individual and group motivation, academic skill development, cultural enrichment, career awareness and increased exposure to higher education. Ten Centers of Excellence operate throughout the State. More than 21,108 students have been inducted into the National Achievers Society, and more than 19,597 students have participated in the Annual Brain Bowl Competitions in History & Culture, Mathematics, Writing, Speech, Word Definition and Coding.

***College Board and Community Partnerships.*** The FEF's partnerships with The College Board and other community-focused entities were formed to enable the FEF to provide supplemental learning experiences for Florida secondary students in underserved communities. Through SAT strategies courses and after school and summer enrichment pre-college programs, students improve skills in science, technology, mathematics, reading, and writing; prepare for standardized tests; and enhance their eligibility for acceptance into college or advanced training programs. Since 2001, 6,776 students have taken FEF SAT strategies courses, 3,040 have completed FEF intensive summer pre-college and technical certification programs, and 385 have participated in FEF's new CodeMasters After School Program.

## THE MCKNIGHT DOCTORAL FELLOWSHIP

- **Stipends, Tuition, and Fees:** For up to five years, the Fellowship pays a \$12,000 annual stipend and up to \$5,000.00 for annual tuition and fees. During the first three years of the Fellowship, the FEF pays all stipends, while the participating universities pay the stipends during the fourth and fifth years.
- **Dissertation and Conference Research and Travel Grants:** To promote professional development and completion of the Ph.D. program, the FEF, in its discretion, awards grants to help defray the cost of writing a dissertation, presenting articles or papers at professional conferences, participating in short term special training programs or institutes, and collecting certain types of data. To apply for a grant, submit a proposal to the MDF Program Manager.
- **FEF Conferences, Workshops, and Institutes:** To promote professional development and completion of the Ph.D. program, the FEF pays for all travel, lodging and meals associated with Fellows' participation in meetings presented by the FEF, as follows:



### **New Fellows' Orientation (late June) - Mandatory**

#### *Objectives:*

- Introduce newly selected Fellows to the MDF Program and welcome them to the McKnight network
- Identify and explain best practices for completing Ph.D. programs
- Demonstrate correlation between graduate courses, comprehensive exams, and dissertation research
- Introduce newly selected Fellows to key graduate school personnel and support services

*Attendance:* New and matriculating Fellows, other graduate students, MDF graduates, university professors and administrators

### **Annual Fellows Meeting (late October) - Mandatory**

#### *Objectives:*

- Provide detailed guidance for completing doctoral degrees and securing professional appointments
- Provide guidance on preparing for comprehensive exams
- Present workshops on developing grant and dissertation proposals
- Advise best practices for publishing articles and manuscripts
- Expose Fellows to cutting edge research
- Introduce Fellows to potential employers
- Offer solutions for conflict resolution
- Foster networking and collaboration
- Celebrate outstanding mentors and new graduates

*Attendance:* Matriculating Fellows, other graduate students, MDF graduates, university professors and administrators

### **Mid-Year Research and Writing Conference (mid-February) - Mandatory**

#### *Objectives:*

- Provide opportunities for Fellows to
  - Present research and receive professional public critique
  - Consult one-on-one with professional editors
  - Prepare for comprehensive exams
  - Receive advice on how to develop grant and dissertation proposals
  - Learn the intricacies of the publication process
  - Collaborate with peers and professionals
  - Interact with potential employers

*Attendance:* Matriculating Fellows, other graduate students, MDF graduates, university professors and administrators

### **Summer Research and Writing Institute (late July)**

#### *Objectives:*

- Provide opportunities for Fellows to
  - Finalize articles and manuscripts for publication
  - Finalize or revise dissertation chapters
  - Receive training on software used for data analysis
  - Receive advice on how to develop grant and dissertation proposals
  - Train for dissertation defense
  - Collaborate with peers and professionals
  - Network with acquisition editors from commercial and university presses

*Attendance:* Advanced matriculating Fellows, other graduate students, university professors, and editors

**Writing Workshops and Editorial Assistance:** To assist with publishing articles and manuscripts and writing the dissertation, the FEF provides free live and online writing workshops as well as editorial assistance.

**Counseling and Conflict Resolution:** To enhance your ability to complete your Ph.D. programs within a reasonable length of time, the FEF offers free conflict resolution workshops and one-on-one academic counseling.

## **POLICIES AFFECTING MCKNIGHT DOCTORAL FELLOWS**

The FEF Board of Directors has developed and approved the following policy statements to clarify issues that have arisen since the Program's inception:

### **Policy #01: Supplementary Institutional Funding for McKnight Doctoral Fellows**

Although a McKnight Fellow may not receive more than one Fellowship at a time, with FEF's written approval, a university may award a Fellow supplemental funding, as long as the award does not require the Fellow to work during his/her first academic year absent extenuating circumstances. The FEF encourages universities to award supplemental funding sparingly, the overall objective being to support as many students as possible to meet the goal of increasing African American and Hispanic doctoral student enrollment.

When a university desires to provide supplemental funding to a McKnight Doctoral Fellow, the university must forward a request for approval, accompanied by the appropriate justification, to the FEF Office. Once approved, the institution may award funding.

### **Policy #02: Travel Funds Available for McKnight Doctoral Fellows**

Each year, the FEF makes limited funds available to McKnight Doctoral Fellows for travel to conferences and symposia to present research findings and enhance professional development. In most cases, the FEF expects the participating institution to match FEF funding dollar for dollar. Where the institution cannot provide matching funds, the FEF, in special cases, may pay the total cost. The FEF considers funding requests in the order submitted until the annual fund is depleted.

### **Policy #03: Admission and Satisfactory Progress Measures**

All Fellows must know and fully understand the requirements for earning their degrees, including the measures universities will use to determine satisfactory progress at each step of the process toward advancing to candidacy. Fellows will find the details of these requirements in university graduate student handbooks, as well as within the unique policies that may govern individual programs.

### **Policy #04: Fellows' Compliance with Military Obligations**

Whenever possible, the FEF will attempt to intercede on behalf of a Fellow required to leave school to meet a military obligation. The FEF first will attempt to secure an educational deferment for the Fellow. If the FEF cannot secure a deferment, the FEF will approve the Fellow's leave-of-absence.

### **Policy #05: Need to Carry a Full Academic Load Each Semester**

Each Fellow must carry a full academic load each semester. However, a Fellow may seek exemption from this policy for the semester prior to taking his/her comprehensive examinations, if he/she has completed his/her required course work. To receive this exemption, the Fellow's university must verify that the Fellow has completed all required course work.

### **Policy #06: Mandatory Conference Attendance**

Barring personal emergency, academic examination, out-of-town presentation at another conference, etc., the FEF expects each matriculating Fellow to attend his/her New Fellows' Orientation, each Annual Fellows Meeting, and

each annual Mid-Year Research and Writing Conference. For excused absence from a mandatory FEF conference, submit a request in writing to the FEF.

**Policy #07: Mandatory Grant Proposal Submission**

Each matriculating Fellow must complete and submit to a potential funder a proposal for a dissertation research grant no later than one academic semester after (1) the Fellow has satisfactorily completed all required courses and comprehensive examinations; and (2) the Fellow's dissertation proposal/prospectus has been accepted by his/her full dissertation committee.

**Policy #08: Mandatory Report of Service**

Each matriculating Fellow must report to the FEF all paid or unpaid employment and/or volunteer service provided to or on behalf of any Florida college, university, public agency or not-for-profit corporation. This service may include, but is not limited to, serving as an instructor, lecturer, teaching assistant, research assistant, graduate assistant, workshop presenter or facilitator, program coordinator or administrator, consultant, tutor, or guest speaker.

**Policy #09: Mandatory Report of Supplementary Funding**

Each matriculating Fellow must report to the FEF the amount and source of any grant, fellowship or monetary award received from a source other than the FEF, including, but not limited to, travel, equipment and research grants.

**Legislative Proviso**

Pursuant to State of Florida legislative proviso, the following Fellowship requirements shall apply: As the student nears completion of the degree program, (1) the student shall be aided by the Board in identifying all positions open in the State of Florida at four-year higher education institutions for tenure track and full-time faculty positions and for post-doctorate positions in the student's degree area; (2) the student shall provide evidence to the Board that he or she has submitted a completed application for all positions so identified, as well as having expended his or her own efforts to identify such positions within the State of Florida; (3) if the student is offered a competitive faculty position with a Florida four-year institution, and does not accept the position, then the student must repay the amount of the Fellowship received; and (4) if the student accepts the position and teaches in Florida, and subsequently leaves the state, then the cost of the Fellowship which must be repaid shall be reduced at the rate of one year's forgiveness for each year the student remained in that or a similar position at a Florida four-year institution, until the number of years the student received a Fellowship has been equaled.

## STRATEGIES FOR SURVIVAL

1. Begin the committee selection process early. Carefully select your committee chairperson then the members of your committee. Make certain your committee members possess research interests similar to yours and that most of them have earned tenure.
2. Plan a program of study. Perfect your study habits. Join study groups, and upgrade your note-taking, reading and writing skills.
3. Develop your own library. Do not rely on others for core curriculum books.
4. Buy the publication manual used in your field (APA, Chicago, etc.).
5. Avoid plagiarism by never deliberately presenting someone else's words, ideas, or other material as your own and always appropriately crediting the original source.
6. Be visible and active in your department, both academically and socially. Hone your collaboration skills.



7. Take advantage of the support systems within your department, your college, and the McKnight Doctoral Fellowship Program.
8. Participate in good, active leisure activities to reduce stress.
9. Avoid receiving an “I” (incomplete) grade in a class, which, in subsequent terms, may cause you to become overwhelmed by the competing demands of old and new courses.
10. Contact FEF for approval prior to accepting employment. Do not allow work to interfere with your academic program.
11. Budget your time wisely. Remember that **your FIRST priority is your academic program.**
12. If conflict occurs, strategize and weigh the consequences carefully. If you must engage in conflict, figure out how to win the battle without losing the war. Form alliances.
13. Do not hesitate or be embarrassed to seek help when you need it. **Ask for help early!**

## PARTICIPATING FLORIDA UNIVERSITIES

Nine Florida universities participate in the McKnight Doctoral Fellowship Program. Through their graduate schools, they not only join in the process of selecting Fellows, but also provide academic and financial counseling to matriculating Fellows. We recommend you visit the graduate dean’s office to learn about the services the graduate school offers and acquaint yourself with your school’s MDF liaison, as listed below:

Dr. David H. Jackson, Associate Provost  
& Dean of the Graduate College  
**Florida A&M University**  
515 Orr Drive  
469 Tucker Hall  
Tallahassee, Florida 32307  
850/599-3505 | 850/599-3727 (F)  
[david.jackson@famu.edu](mailto:david.jackson@famu.edu)

Dr. Khaled Sobhan, Professor and Interim Dean of the Graduate College  
**Florida Atlantic University**  
777 Glades Road, SU 80, 101  
Boca Raton, Florida 33431  
561/297-3624 | 561/297-1212 (F)  
[ksobhan@fau.edu](mailto:ksobhan@fau.edu)

Mr. Gary L. Hamme, Associate Vice Provost, Enrollment Management  
**Florida Institute of Technology**  
150 West University Boulevard  
Melbourne, Florida 32901  
321/674-8832 | 321/674-8874 (F)  
[gary@fit.edu](mailto:gary@fit.edu)

Dr. Sonja Montas-Hunter, Assistant Vice-Provost, Office of Student Access and Success  
**Florida International University**  
11200 SW 8th Street, PC 230  
Miami, Florida 33199  
305/348-2455 | 305/348-3433 (F)  
[sonja.montashunter@fiu.edu](mailto:sonja.montashunter@fiu.edu)

Dr. Adrienne P. Stephenson, Assistant Dean & Director, Graduate Fellowships & Awards  
**Florida State University**  
4001E HSF  
Tallahassee, Florida 32306-1410  
850/644-8132 | 850/644-2969 (F)  
[apstephenson@fsu.edu](mailto:apstephenson@fsu.edu)

Dr. Jennifer Parham, Assistant Dean, College of Graduate Studies  
**University of Central Florida**  
Orlando, Florida 32816-0112  
407/823-4337 | 407/823-6442 (F)  
[jennifer.parham@ucf.edu](mailto:jennifer.parham@ucf.edu)

Dr. Tyisha Hathorn, Director, Office of Graduate Minority Programs  
**University of Florida**  
235 Grinter Hall  
Gainesville, Florida 32611  
352/392-6444 | 352/392-3773 (F)  
[thathorn@ufl.edu](mailto:thathorn@ufl.edu)

Dr. Guillermo Prado, Dean of the Graduate School  
**University of Miami**  
Ashe Administration Bldg, Suite 235  
Coral Gables, Florida 33124  
305/284-4154 | 305/284-5441 (F)  
[gprado@miami.edu](mailto:gprado@miami.edu)

Dr. Ruth Bahr, Assistant Dean, Graduate Studies  
**University of South Florida**  
4202 East Fowler Avenue – ALN 226  
Tampa, Florida 33620  
813/974-7161 | 813/974-5762 (F)  
[rbahr@usf.edu](mailto:rbahr@usf.edu)

# MCKNIGHT DOCTORAL GRADUATES

Name	Institution	Discipline	Place of Employment
1988			
Dr. Faith Berry ( <i>deceased</i> )	FSU	English	
Dr. Yvette R. Harris	UF	Developmental Psychology	Miami University (OH)
Dr. Patricia J. Trice	FSU	Music	Hillsborough Community College ( <i>retired</i> )
1989			
Dr. Linda Mack Brewer	UF	Communication Sciences & Disorders	Dar Al-Hekma College
Dr. Gerri Elie	UF	Counseling Psychology	Dillard University ( <i>retired</i> )
Dr. Tommie H. Stewart	FSU	Theatre	Alabama State University
1990			
Dr. Valliere Richard Auzenne	FSU	Mass Communications	Florida State University
Dr. John DeCatrel	UCF	Computer Engineering	Florida State University ( <i>retired</i> )
Dr. N. Horace Mann	UM	Biomedical Engineering	Fisk University
Dr. Myron C. Munday ( <i>deceased</i> )	FSU	Music	
Dr. Hiram C. Powell	FSU	Music	Bethune Cookman University
Dr. Clarence Thomas	UF	Mass Communications	Virginia Commonwealth University
Dr. Roberta Troy	UF	Biology	Tuskegee University
Dr. Judith Walker	UM	Psychology	University of Mount Union (OH)
Dr. Anitra Wilson	UF	Electrical Engineering	Louisiana State University
Dr. Latresia A. Wilson	UF	Nuclear Engineering	Wuesthoff Medical Center - Melbourne
Dr. Roderick Wilson	UF	Electrical Engineering	Management and Tech. Solutions Group
1991			
Dr. Deborah Andrews Brunson	FSU	Mass Communications	University of North Carolina Wilmington
Dr. Angela Campbell	UF	Biomedical Engineering	
Dr. Marjorie Campbell	UF	Environmental Engineering Sciences	Clark Atlanta University
Dr. Michael Chappell	FSU	Mathematics Education	Middle Tennessee State University
Dr. Dayna Clarke-Cameron	UF	Pharmaceutical Science	
Dr. Marion G. Harmon	FSU	Computer Science	Florida A&M University
Dr. Gregory L. Harris	UF	Chemistry	Thermo Fisher Scientific
Dr. Dawn J. Holmes	FSU	Computer Science	
Dr. Marcus Iszard	FAMU	Pharmaceutical Science	University of Missouri - Kansas City
Dr. Joyce Lee	FAMU	Pharmaceutical Science	
Dr. Yvonne McIntosh	FSU	French	Florida A&M University
Dr. Anna Ramsey-Ewing	UF	Microbiology	National Institutes of Health
Dr. Robert Williams	FAMU	Pharmaceutical Science	
1992			
Dr. Rosonald Bell	FAMU	Pharmaceutical Science	Pfizer Inc.
Dr. Sonja Ebron	UF	Electrical Engineering	blackEnergy (GA)
Dr. Carl Goodman	FAMU	Pharmaceutical Science	Florida A&M University
Dr. Renard F. Harlow	FSU	Speech Pathology	Recitable.com Publications
Dr. Michael E. Hodge	UF	Sociology	Morehouse College
Dr. Brenda Jarmon	FSU	Social Work	Florida A&M University
Dr. Gary Paul	UF	Political Science	Florida A&M University
Dr. Walter J. Pierce	Barry	Social Work	Barry University
1993			
Dr. Eloise Adams	UF	Plant Molecular Biology	Norfolk Collegiate School (VA)
Dr. Thomasenia L. Adams	UF	Mathematics	University of Florida
Dr. Janice Allen-Kelsey	UF	Medical Sociology	Bethune-Cookman University
Dr. Emma J. Brown	UF	Nursing	University of Kentucky ( <i>retired</i> )
Dr. Janie Canty-Mitchell	UM	Nursing	LeadersCare, LLC
Dr. Lynne Hardy Claye	FAMU	Pharmaceutical Science	
Dr. Patricia Darlington	UF	Mass Communications	Florida Atlantic University
Dr. Michelle R. Dunlap	UF	Social Psychology	Connecticut College
Dr. M. Patricia E. Hilliard-Nunn	FSU	Mass Communications	University of Florida and Makare Publishing Co.
Dr. Delores C.S. James	UF	Health and Human Performance	University of Florida
Dr. Veretta Johnson-Sabb ( <i>deceased</i> )	UF	Civil Engineering	
Dr. Carolyn D. Jones-Herring	FAMU	Pharmaceutical Science	Otsuka American Pharmaceutical
Dr. Ivy D. Locke ( <i>deceased</i> )	UF	Business/Finance	
Dr. Harriet A. Roland	UF	Communications	South Carolina State University
Dr. Catherine M. Waters	UM	Nursing	University of California - San Francisco
Dr. Dave D. Weatherspoon	UF	Food & Resource Economics	Michigan State University
Dr. Sally K. Williams	UF	Food Science	University of Florida

Name	Institution	Discipline	Place of Employment
1994			
Dr. Craig Bythewood	UF	Finance	Vertical Holdings
Dr. Fran T. Gordon Close	FAMU	Pharmacology	Florida A&M University
Dr. Mark C. Dawkins	FSU	Accounting	University of North Florida
Dr. Lesley-Mae A. Foulkes-Jamison	UF	Clinical Psychology	Foulkes-Jamison, Lesley, Ph.D.
Dr. Vikki T. Gaskin-Butler	UF	Clinical Psychology	University of South Florida - St. Petersburg
Dr. Richard Gragg III	FAMU	Pharmaceutical Science	Florida A&M University
Dr. Simone Heyliger	FAMU	Pharmaceutical Science	Hampton University
Dr. Jacqueline F. Huey	FSU	Criminology	Indiana University Northwest
Dr. David J. Jamison	UF	Anthropology	
Dr. Charlotte Johnson-Davis	FSU	Psychology	Florida Department of Education
Dr. Raymond L. Major	UF	Decision & Information Science	Virginia Tech
Dr. Frederic D. McKenzie	UCF	Computer Engineering	Old Dominion University
Dr. Tangelia D. Poole-Harris	FAMU	Pharmaceutical Science	Magellan Health Services
Dr. Kenyatta O. Rivers	UF	Speech Language Pathology	University of Central Florida
Dr. Darrell Rodgers	FAMU	Environmental Toxicology	Centers for Disease Control and Prevention
Dr. Jeremy Smith	UF	Electrical Engineering	
Dr. Lillie Ward	FSU	Computer Science	Fort Valley State University
Dr. Roderick Dion Waters	FSU	History	
1995			
Dr. Gail S. Ayala	FSU	Business/Marketing	Dartmouth College
Dr. James T. Brown	UCF	Engineering	SEBA Solutions, Inc.
Dr. Kathy M. Cousins-Cooper	USF	Mathematics Education	North Carolina A&T University - Greensboro
Dr. Frank Crosby	UF	Mathematics	Naval Surface Warfare Center; Florida State University Panama City
Dr. Mark A. Dexter	USF	Electrical Engineering	Samsung Electronics America
Dr. Jovier D. Evans	UM	Health Psychology	National Institute of Mental Health
Dr. Charles W. Ford, Jr.	FSU	Computer Science	Central State University
Dr. Peter V. Green	FSU	Physics	
Dr. Nikitah Okembe-Ra Imani	UF	Sociology	University of Nebraska - Omaha
Dr. Charlie M. Lollis	UM	Clinical Psychology	Charlie Lollis Harris Psychiatry
Dr. Ernest McDuffie	FIT	Computer Science	The Global McDuffie Group
Dr. Carriella H. Nance	FSU	Psychology	Stetson University
Dr. Alphonso Smith	USF	Mathematics Education	
Dr. Frank D. Williams	UF	English	Strayer University - Savannah
Dr. Jacqueline A. Williams	FSU	Business Administration	North Carolina A&T University - Greensboro
1996			
Dr. Russell Benjamin	UF	Political Science	Northeastern Illinois University
Dr. Raymond R. Carthy	UF	Zoology	University of Florida
Dr. Kevin K. Green	USF	Electrical Engineering	DigitalGlobe
Dr. Sybil K. Johnson	FSU	Theatre Arts	Hillsborough Community College
Dr. Ronnie King	USF	Computer Science	Florida State College - Jacksonville
Dr. Cynthia McLeod-Fletcher	UM	Nursing	Florida International University
Dr. Waltke Paulding	UF	Physiology	Xavier University
Dr. Howard S. Rasheed ( <i>deceased</i> )	FSU	Business Management	
Dr. Geraldine H. Seay	UF	English	Florida A&M University
Dr. Sharon D. White	FSU	Business Management	Winston Salem State University
Dr. Elliott Williams	UF	Operations Research	
1997			
Dr. Millicent E. Brown	FSU	History	Clafin University ( <i>retired</i> )
Dr. Gregory Chenier	UM	International Studies	
Dr. Billy Close	FSU	Criminology	Florida State University
Dr. Shawnta S. Friday	FIU	Business/Management	Florida A&M University
Dr. Sean L. Jones	UF	Material Science Engineering	National Science Foundation
Dr. Natalie R. King-Pedroso	FSU	English Literature	Florida A&M University
Dr. Monifa A. Love	FSU	English	Bowie State University
Dr. Judith R. McCalla	UM	Clinical Psychology	University of Miami
Dr. Rita Clay McMillan	UF	Business Administration/Marketing	Virginia Intermont College
Dr. Delia F. Olufokunbi	UF	Clinical & Health Psychology	NIH Center for Scientific Review
Dr. Arturo Rankin	UF	Engineering	NASA - California Institute of Technology
Dr. Vincent Snipes	FSU	Mathematics Education	Winston Salem State University
Dr. Sonya A. Felton Stephens	FIT	Mathematics	Florida A&M University
Dr. Floyd N. Tyler, Jr.	FSU	Business/Finance	Preserver Partners, LLC
Dr. Cheryl E. Williams	FSU	Speech Communications	Concordia University



Name	Institution	Discipline	Place of Employment
1998			
Dr. Deborah A. Austin	USF	Communications	Reachup Inc.
Dr. Michael Lee Branham	UF	Pharmaceutical Chemistry	Biodata
Dr. Gloria Ann Brinham	UF	Clinical & Health Psychology	Womens Health at Waters Edge
Dr. Francis Daniel	FSU	Business Administration	Belmont University - Nashville
Dr. Phillip Eaglin	FSU	Science Education	Texas Education Agency
Dr. Oliver Edwards	FIU	Counseling Psychology (Educ. Adm.)	University of Central Florida
Dr. Bobby Granville	FSU	Computer Science	Florida A&M University
Dr. Gina C. Green	USF	Business Admin/Information Systems	Baylor University
Dr. Phyllis Y. Keys	FSU	Business/Finance	Morgan State University
Dr. Sharon D. Morrison	UF	Health and Human Performance	University of North Carolina - Greensboro
Dr. Lisa R. Raiford	UF	Instruction and Curriculum	Suncoast High School
Dr. Michael L. Washington	UF	Industrial Engineering	Centers for Disease Control and Prevention
Dr. Jacqueline E. Wood	UF	English	University of Missouri - Kansas City
1999			
Dr. Clayton J. Clark, II	UF	Environmental Engineering	Florida A&M University
Dr. Melinda D. Collins	UM	Clinical Psychology	Psychological Services of Jacksonville
Dr. Lincoln Harding Forbes	UM	Industrial Engineering/Business	Miami-Dade County Public Schools
Dr. Rosalyn Howard	UF	Anthropology	University of Central Florida (retired)
Dr. Beda Jean-Francois	UM	Psychology/Development	Center for Deployment Psychology
Dr. Chawne Monique Kimber	UF	Mathematics	Lafayette College
Dr. William Lewis, Jr.	FSU	Information & Management Sciences	Terry College of Business
Dr. Palmer McDonald	FSU	Business/Marketing	Cochise College (AZ)
Dr. Tarshia Stanley	UF	English	Spelman College
Dr. Tommie Yvette Turner	FAMU	Environmental Toxicology	Harris Stowe State University
Dr. Tina M. Williams	FAMU	Pharmacology	
2000			
Dr. Diane S. Allen-Gipson	FAMU	Pharmaceutical Science	University of South Florida
Dr. Tanya Benford	USF	Business	Florida Gulf Coast University
Dr. Wendy Coleman	FSU	Theatre	Albany State University
Dr. Sue Carter Collins	FSU	Criminology	Georgia State University
Dr. Samuel J. Eaves, II	FSU	Computer Science	Kronos, Inc.
Dr. Dawn Michelle Elliott	UM	Industrial Engineering	NASA - Kennedy Space Center
Dr. Kimberly Michelle Ellis	FSU	Business/Strategic Management	Florida Atlantic University
Dr. Nathaniel Johnson	UM	Economics	Florida A&M University
Dr. Arnold Lewis	FSU	Political Science	William Peterson University
Dr. Robert Lindsey	UF	Health & Human Performance	Johnson C. Smith University
Dr. Tanya Quille	UM	Counseling Psychology	Self-employed
Dr. Winifred D. Scott	FSU	Business/Accounting	St. Mary's College of California
Dr. James Lawrence Taylor, Jr.	FSU	Theatre & Dramaturgy	Rhode Island College
Dr. Chanequa J. Walker-Barnes	UM	Psychology/Child Clinical	Mercer University
Dr. Mary M. Williams	UM	Sociology	Clafin University
Dr. Tiffani Williams	UCF	Computer Science	Northeastern University - Charlotte
Dr. James Jeffrey Wilson	FSU	Political Econ./Govern. Leadership	U.S. Federal Election Commission
2001			
Dr. Selina Darling-Reed	FAMU	Pharmacology	Florida A&M University
Dr. Vallie M. Holloway	FAMU	Pharmaceutical Science	Mayo Clinic
Dr. Fern Jureidini-Webb	USF	Public Health	University of Florida
Dr. Karl George Lawrence	FSU	Business Finance	Excelsior College
Dr. Claire Michelle Rice	FIU	Comparative Sociology	Nova Southeastern University
Dr. Aaron Robinson	FSU	Electrical Engineering	University of Memphis
Dr. Leroy Robinson	USF	Business/Marketing	University of Houston - Clear Lake
Dr. Annette Singleton-Tolson	FSU	Business/Marketing	Fulbright Foundation
Dr. Felicia Taylor	UF	Math Education	Jones International University
Dr. Jerry Silwyn Turner	FIT	Mathematics	Edward Waters College
2002			
Dr. Michael I. Arrington	USF	Communications	The Wright Center for Graduate Medical Edu.
Dr. Lisa Campbell	UF	Clinical Psychology	East Carolina University
Dr. Jaumeiko Coleman-Brown	UF	Language Pathology	American Speech - Language - Hearing Assoc.
Dr. Jonathan Gayles	USF	Anthropology	Georgia State University
Dr. Kathryn Morris	UM	English/Caribbean Literature	Self-employed
Dr. Patricia Reeves-Johnson	FSU	Musicology	Tennessee State University
Dr. Rheeda Walker	FSU	Clinical Psychology	University of Houston
Dr. Mark H. Weatherspoon	USF	Electrical Engineering	Florida State University



Name	Institution	Discipline	Place of Employment
2003			
Dr. Kimberly Black-Parker	FSU	Information Studies	Chicago State University
Dr. Dierdra Chester	FIU	Dietetics & Nutrition	U.S. Department of Agriculture
Dr. Linda Clemons	UF	Mathematics Education	East Carolina University
Dr. Max Rony Francois	USF	Public Health/Toxicology	Naval Health Clinic - Corpus Christi, TX
Dr. Charity Freeman	USF	English	Hillsborough Community College
Dr. Jacquelyn McMillan	FSU	Social Work	Florida A&M University
Dr. Karen Morrison	UF	History	
Dr. Kimberly D. Robinson	UM	English	Government of Bermuda
Dr. Ahsha Tribble	FSU	Meteorology	U.S. Department of Energy
Dr. Michelle Walker	FAMU	Pharmacology	U.S. Food and Drug Administration
Dr. Tamara Warner	UF	Clinical Psychology	University of Florida
Dr. Mary Woolridge	UCF	Math Education	Western Governors University/MJW Consulting
2004			
Dr. Gary Adams	FSU	Business/ Strategic Mgmt.	Auburn University
Dr. Damon Bryant	UCF	Industrial Organizational Behavior	Lumina Datamatics Assessment & Analytics
Dr. Yvonne Combs	UF	Sociology	Lander University (South Carolina)
Dr. Larry Davis	UCF	Electrical Engineering	Lumina Datamatics Assessment & Analytics
Dr. Lawrence Flowers	UF	Microbiology	Fayetteville State University
Dr. Deirdre Gonsalves-Jackson	FIT	Biological Sciences	Virginia Wesleyan College
Dr. Tameka Hobbs	FSU	History/United States	Florida Memorial University
Dr. William Hobbs	FSU	English/Creative Writing	Florida Memorial University
Dr. Joanne Hyppolite	UM	English	Historical Museum of Southern FL
Dr. Antoinette Jackson	UF	Anthropology	University of South Florida
Dr. Morgan Johnson	UM	Computer Science	IBM
Dr. Wanda Jones	UF	Forrest Conservation	National Geographic Channel
Dr. Elgin L. Klugh	USF	Applied Anthropology	Coppin State University
Dr. Nyamekye W. A. Laird	FSU	Counseling Psychology	Dr. Kinsler & Associates
Dr. Antoinette Lynch	USF	Accounting/Auditing/MIS	Florida International University
Dr. Dionne Mayhew	UF	Pharmacy Health Care Administration	
Dr. Pamela R. Moses	USF	Mathematics Education	Winston Salem State University
Dr. Kersuze Simeon	UM	French Literature	University of South Florida
Dr. Joe L. Sweet	FAMU	Pharmaceutical Sciences	Bainbridge High School
Dr. Tavaris Thomas	FSU	Computer Science	Bell Labs/Lucent Technologies
Dr. Laurel Thompson	Barry	Social Work	School Board of Broward County
Dr. Sonja Trent-Brown	USF	Psychology	Hope College
Dr. Claude Villiers	UF	Civil Engineering	Florida Gulf Coast University
2005			
Dr. Afua Arhin	UF	Nursing	Fayetteville State University
Dr. Arlesia L. Brock-Mathis	USF	Public Health	Florida A&M University
Dr. Anthony Burrow	FIU	Psychology	Cornell University
Dr. Sheron Fraser-Burgess	UM	Philosophy	Ball State University
Dr. Angela T. Hall	FSU	Business Administration	Michigan State University
Dr. Tiffany N. Hinton	UF	English Literature	Northern Kentucky University
Dr. Inneke Jackson-Johnson	FAMU	Pharmaceutical Sciences	North Carolina Central University
Dr. Matrecia James	FSU	Business Administration	St. Bonaventure University
Dr. Versie Johnson Mallard	USF	Nursing	University of South Florida
Dr. Elda Kanzki-Veloso	Barry	Counseling Psychology	Nova Southeastern University
Dr. Nigel Malcolm	USF	Communications/Rhetoric	Keene State College
Dr. Judith Samuel	FSU	Marriage and Family Therapy	Family Matters Parent Training & Info Center
Dr. Joi Woodard-Bulls	FSU	Family and Child Sciences	University of North Carolina - Greensboro
2006			
Dr. Neporcha Cone	USF	Science Education	Kennesaw State University
Dr. Tarsha Nicol Dargan	FSU	Industrial Engineering	Florida A&M University
Dr. Johnny Davis	UF	Microbiology	U.S. Food and Drug Administration
Dr. Warren Davis	FSU	Computer Science	Sandia National Lab
Dr. Jeanean Davis-Street	USF	Business Administration	Bridgewater State University
Dr. Renee Franklin	FSU	Information Sciences	Syracuse University
Dr. Tabia Henry	USF	Public Health	Morehouse School of Medicine
Dr. Mark Howse	FSU	Mathematics Education	Morehouse School of Medicine
Dr. Monica James-Smith	UF	Chemical Engineering	The Lubrizol Corporation
Dr. Jermaine Kennedy	USF	Physics	U.S. Navy
Dr. Rebekah M. Lane	FSU	Mathematics Education	Tallahassee Community College
Dr. Kimberly Lebbby	FAMU	Pharmaceutical Science	

Name	Institution	Discipline	Place of Employment
2006 (Cont.)			
Dr. Chavonda Mills	FAMU	Medicinal Chemistry	Georgia College & State University
Dr. Russell Price	FSU	Business/Finance	Howard University
Dr. Tamika Sanchez-Jones	UM	Nursing	Setters Medical Group, P.A.
Dr. Ceceile Whight-Mason	FAMU	Pharmacology	Columbia Southern University (AL)
Dr. Todd White	UF	Neuroscience	Morehouse School of Medicine
Dr. LaRicka Wingate	FSU	Psychology	Oklahoma State University
2007			
Dr. Vaneesha Boney	FSU	Finance	University of Denver
Dr. Elizabeth Delancy	FSU	Humanities/Dance	Tallahassee Community College
Dr. Maxine Downs	UF	Anthropology	Yanga Productions
Dr. Michelle Ferrier	UCF	Texts & Technology	Ohio University
Dr. Deborah Johnson-Simon	UF	Anthropology	Morgan State University
Dr. Perry Kyles	FIU	History	Morgan State University
Dr. Eric Maxwell	USF	Electrical Engineering	Georgia Tech
Dr. Sybil Rosado	UF	Anthropology	Benedict College
Dr. Shalonda Slater	UF	Clinical Psychology	Childrens Hospital Medical Center
Dr. Ester Swilley	FSU	Marketing	Kansas State University
Dr. Anita Wholuba	FSU	English	
2008			
Dr. Jennifer Bowers	FAU	Industrial Organizational Behavior	Florida A&M University
Dr. Betty Gheta Brener	UM	Nursing	Florida International University
Dr. Ayeisha Brinson	UM	Biology	National Oceanic and Atmospheric Admin.
Dr. Lonnie Bryant	USF	Business Administration	University of Tampa
Dr. Rasheeta Chandler	USF	Nursing	Emory University (GA)
Dr. Jennifer Collins	FAU	Business	Florida A&M University
Dr. McArthur Freeman II, MFA	USF		University of South Florida
Dr. Kelly Gamble	FSU	Business/Marketing	Valdosta State University
Dr. Shelby Gilbert	FIU	Curriculum & Instruction	Florida Gulf Coast University
Dr. Erika Knight	UF	Food & Resource Economics	Fort Valley State University
Dr. Nzinga Metzger	FSU	Anthropology	Florida A&M University
Dr. Ade Ofunniyin	UF	Anthropology	American College of Building Arts
Dr. T. Nicole Phillips	UCF	Business Administration/Management	University of Mary Washington
Dr. Guitele Rahill	FIU	Social Work	University of South Florida
Dr. Erica Smith	UM	Sociology	Keiser University
Dr. JeffriAnne wilder	UF	Sociology	University of North Florida
2009			
Dr. Nadine Bewry	USF	Medical Sciences	National Cancer Institute
Dr. Juan David Blandon	UCF	Physics	University of Oklahoma
Dr. Sandra Brown	UM	Nursing	Miami Healthy Weight Institute
Dr. Marlo David	UF	English	Purdue University
Dr. Dominique Delalot	UF	Clinical Psychology	University of Michigan
Dr. Decia Dixon	USF	Psychology	Atlanta Area Psychological Associates, P.C.
Dr. Natasha N. Duncan	UF	History	Lehigh University
Dr. Lamar Garnes	FSU	English	Florida A&M University
Dr. Calorie Gray	FIU	Psychology	U.S. Department of Education
Dr. Anna Green	FSU	Communication Sciences & Disorders	Atlanta Psychological Services
Dr. Deidra Hodges	USF	Electrical Engineering	University of Texas, El Paso
Dr. Linda Hogans	Barry	Educational Leadership	St. Petersburg College
Dr. Nkechi Ichite	FAMU	Pharmaceutical Sciences	FL State Bureau of Pharmaceutical Science
Dr. William Jeffries, IV	UF	Sociology	Centers for Disease Control and Prevention
Dr. Nadia Johnson	UM	English	
Dr. Yelenis Mari	USF	Medical Sciences	The Scripps Research Institute
Dr. Michael McCaskill	FAMU	Pharmaceutical Sciences	Tulane University
Dr. Ron Myers	FIU	Math Education	Miami-Dade County Public Schools
Dr. Karen Pierre	UM	Sociology	Humana
Dr. Hassan Rasheed	UF	Computer Engineering	Morgan State University
Dr. Christopher Reid	UCF	Industrial Engineering	U.S. Army Natick Soldier Systems Center
Dr. Sabrina Robinson	USF	Nursing	Nova Southeastern University & Walden University
Dr. Basil Smith	FAMU	Pharmaceutical Sciences	Bayfront Hospital - Port Charlotte
Dr. Brandi Tanner	USF	School Psychology	Self-employed
Dr. Jillian Tullis-Owen	USF	Communications Studies	University of North Carolina - Charlotte
Dr. John Warford	UF	Geography	Florida A&M University
Dr. Marilyn Williams	USF	Environmental Science	University of Denver
Dr. Tonjua Williams	Barry	Educational Leadership	St. Petersburg College

Name	Institution	Discipline	Place of Employment
2010			
Dr. Monique Bedasse-Semuda	UM	History	Connecticut College
Dr. Quenton Bonds	USF	Electrical Engineering	NASA - Goddard Space Flight Center/The Accelerated Destiny Initiative
Dr. Chandre Butler (deceased)	UCF	Industrial Engineering	
Dr. Kelly Cowart	FSU	Marketing	Grand Valley State University
Dr. Camille Feanny	UF	Anthropology	CNN International
Dr. Archie Harmon	FSU	Communication Sciences & Disorders	Washington University School of Medicine
Dr. Jessica Hill	FSU	Psychology	Utah Valley State University
Dr. Daniel Hollar	FSU	Psychology	Bethune Cookman University
Dr. Yoli Jeune-Smith	UF	Materials Sciences & Engineering	7West Communications
Dr. Jessica Jones	UF	Psychology	Duke University
Dr. Chivon Mingo	USF	Aging Studies	Georgia State University
Dr. Shalewa Noel-Thomas	USF	Public Health	University of Florida
Dr. Erlande Omisca	USF	Environmental Science	Florida Department of Health
Dr. Ophir Ortiz	USF	Electrical Engineering	New Jersey Center for Biomaterials
Dr. Raymond Ottinot	USF	Psychology	
Dr. Tameka C. Phillips	UF	Veterinary Medical Science	Covance
Dr. Javier Pulecio	USF	Electrical Engineering	National Institutes of Standards & Technology
Dr. Patrice Reid	FIT	Industrial Organizational Behavior	Defense Language Office (Patrick AFB)
			Medical Anesthesia and Pain Management Consultants
Dr. Zulay Ritrosky	UCF	Nursing	
Dr. Raymond Rodriguez	UM	Educational Leadership	James Madison University
Dr. Jana Rutherford	FAU	Marketing	Barry University
Dr. Ameenah Shakir	UM	History	University of Miami
Dr. Horacio Sierra	UF	English Literature	Bowie State University
Dr. Alisha Winn	USF	Anthropology	Fayetteville State University
Dr. Ying Zhu	USF	Theater	University of South Florida
2011			
Dr. Christine Ajayi	FSU	Marriage and Family Therapy	Nova Southeastern University
Dr. Stephanie Aldebot	UM	Clinical Psychology	
Dr. Nicole Anderson	USF	Biomedical Science	University of South Florida
Dr. Charmane Caldwell	FSU	Electrical Engineering	Florida State University
Dr. Kelly Carter	USF	Business Administration/Finance	Morgan State University
Dr. Latarsha Chisholm	UF	Health Sciences	University of Central Florida
Dr. Maritza Concha	UCF	Public Affairs	Covian Consulting, Inc.
Dr. Natasha Cover	USF	Biomedical Engineering	Johnson & Johnson Corp.
Dr. Camile Daniels	USF	Marine Science	King Abdullah University of Science and Tech
Dr. Natalie Dopson	UCF	Education	SUNY - Cortland Campus (NY)
Dr. Erica Edwards	FIU	History	University of North Carolina - Charlotte
Dr. Chaka Ferguson	FIU	International Relations	Florida International University
Dr. Stephanie Fitzpatrick	UM	Psychology	Rush University Medical Center
Dr. Bernita Frazier	FSU	School Psychology	Georgia Department of Public Health
Dr. Ransford Hyman	USF	Computer Science & Engineering	Intel Corporation
Dr. Sergio Iniguez	FSU	Neuroscience	University of Texas at El Paso
Dr. Karla Kennedy	UF	Journalism	Florida International University
Dr. Ruben Kertesz	UF	Environmental Engineering	U.S. Environmental Protection Agency
Dr. Vanessa Littleton	UCF	Public Affairs	California State University - Monterrey Bay
Dr. Yasmeen Nkrumah- Elie	FAMU	Toxicology	University of Colorado
Dr. Mibel Pabon	USF	Biomedical Science	University of South Florida
Dr. Felicia Powell	FAU	Ocean Engineering	Department of Defense
Dr. Dorielle Price	USF	Electrical Engineering	Self-employed
Dr. Al-Aakhir Rogers	USF	Electrical Engineering	Self-employed
Dr. Derrick Rowe	USF	Medical Sciences	University of South Florida
Dr. Larry Russell	FAMU	Pharmaceutical Sciences	Stony Brook University (NY)
Dr. Edward Shaw	UF	Anthropology	University of Nebraska - Omaha
Dr. Walteria Tucker	FAU	Comparative Studies	Florida Atlantic University
Dr. Theodore Thornhill	FSU	Sociology	St. Olaf College (Northfield, MN)
Dr. Nefertiti Walker	UF	Sports Management	University of Massachusetts
Dr. Nicole West	USF	Higher Education Administration	University of South Florida - Student Success
Dr. Sandra Williams	FIU	Psychology	Childrens Services Council of Broward
2012			
Dr. Rachel Andre	UF	Clinical Psychology	Veterans Affairs Hospital
Dr. Carla Parker Athill	USF	Medical Sciences	USF - Department of Pediatrics (St. Pete, FL)



Name	Institution	Discipline	Place of Employment
2012 (Cont.)			
Dr. Jennifer Bolden	UCF	Clinical Psychology	University of Tennessee - Knoxville
Dr. Vernessa Bowles	FSU	School Psychology	Minority Behavioral Health Group (OH)
Dr. Albert Dorsey	FSU	History	University of North Florida
Dr. Marc Elle	UCF	Chemistry	University of Colorado - Denver
Dr. Brian Fisher	UCF	Electrical Engineering	TDK-EPC Corporation
Dr. Kavon Franklin	FSU	English	Alabama State University
Dr. Carolaine Garcia	UCF	Industrial Organizational Behavior	IBM
Dr. Jennifer Johnson	UCF	Counselor Education	Oakland University
Dr. Jacqueline Kent	UM	History	University of Las Vegas Nevada
Dr. Nicolas Lebrede	UCF	Public Affairs	DeVry University/Keller Graduate School of Mgmt.
Dr. Jamae Morris	USF	Anthropology	Centers for Disease Control and Prevention
Dr. Oneil Newell	FAMU	Pharmaceutical Sciences	Florida A&M University
Dr. Ravic Nijbroek	USF	Environmental Science	Conservation International - Suriname (D.C.)
Dr. Michelle Phillips	UF	Economics	University of Florida
Dr. Anderson Prewitt	UF	Materials Sciences & Engineering	Prewitt Solutions
Dr. Tony Price	USF	Electrical Engineering	Qorvo, Inc.
Dr. Mikal Rasheed	UM	Clinical Psychology	U.S. Air Force (TX)
Dr. Luis Rivera	FSU	Music Studies	University of South Alabama
Dr. Tarah Rogowski	FSU	Counseling Psychology	Florida State University
Dr. Tralonda Triplett	UM	Epidemiology	Institute for Successful Leadership, Inc. (FL)
Dr. Josune Urbinstondo	UM	English	University of Miami/Write Your Acceptance
Dr. Pamela Wisniewski	UCF	Computer Science	University of Central Florida
2013			
Dr. Justin Boone	FIU	Engineering	
			University of Florida/North Florida AIDS Education & Training Center
Dr. Taryn Buckley	UF	Health & Human Performance	
Dr. Brandon Burrell	FSU	Art History	U.S. Navy
Dr. Lillian Campbell-Wynn	UCF	Modeling and Simulation	Air Force Agency for Modeling & Simulation (FL)
Dr. Crystal Chapman	USF	Nursing	University of Alabama - Birmingham
Dr. Nikita Chavarria-Nemhard	UF	Microbiology & Cell Science	University of Texas Rio Grande Valley
Dr. Emelda Curry	USF	Anthropology	University of South Florida
Dr. Shawna Dell	UF	Communication Disorders/Audiology	University of Florida
Dr. Kelvin Farmer	FAMU	Educational Leadership	Florida A&M University
Dr. Dominique Gehy	FSU	Finance	Hofstra University (NY)
Dr. Lizette Howard	USF	Government and International Affairs	Defense Intelligence Agency
Dr. Tashana Howse	UCF	Math Education	Georgia Gwinnett College
Dr. Eric Huey	FIU	Electrical Engineering	Raytheon
Dr. Brandon Jackson	FSU	Sociology	University of Arkansas
Dr. Omotayo Jolaosho	USF	Anthropology	University of South Florida
Dr. Manuel Lopez	UF	Psychology	
Dr. Samique March-Dallas	FIU	Business Administration	Florida A&M University
Dr. Cecily McCoy-Fisher	UCF	I/O Behavior	Navy Training Systems Division (FL)
Dr. Silvia Mitchell	UM	History	Purdue University
Dr. Ramon Montero	UM	Engineering	University of Miami
Dr. Cyndia Muniz	UCF	Education	University of Central Florida
Dr. Rumbi Mufuka	UM	International Relations	Booz Allen Hamilton
Dr. Christi Navarro-Batista	FIU	Public Health	Children's Services Council of Broward
Dr. Michelle Offutt	USF	Nursing	St. Petersburg College
Dr. Darina Palacio	UF	Environmental Engineering	U.S. Department of Energy
Dr. Shara Pantry	USF	Biomedical Sciences	University of Miami
Dr. Chis Patti	USF	Communications	Appalachian State University (NC)
Dr. Emmanuel Pereira	FSU	Ethnomusicology	Florida State University
Dr. Amanda Price	UM	Kinesiology	Winston Salem State University (NC)
Dr. Brandon Richard	USF	Electrical Engineering	Qorvo, Inc.
Dr. Federica Robinson-Bryant	UCF	Industrial Engineering	Embry-Riddle Aeronautical University (FL)
Dr. Jackie Rodriguez	UCF	Education	College of William & Mary (VA)
Dr. Xaymara Serrano	UM	Marine Sciences	National Oceanic and Atmospheric Admin.
Dr. Calvin Stewart	UCF	Mechanical Engineering	University of Texas - El Paso
Dr. Amanda Tazaz	FSU	Oceanography	Florida State University
Dr. Katina Thompson	FSU	Management	Illinois State University
Dr. Randolph Turnbull	FSU	French Literature	Florida State University
Dr. Carol Williams-Oladele	USF	Public Health	Yale School of Medicine
Dr. Daria Willis-Joseph	FSU	History	Lee College
Dr. Monica Wilson	USF	Marine Sciences	University of Florida/IFAS Extension
Dr. Ronee Wilson	USF	Public Health	University of South Florida



Name	Institution	Discipline	Place of Employment
2014			
Dr. Frank Alexander, Jr.	USF	Engineering	Cellasys GmbH (Germany)
Dr. Noel Alphonese	UM	Philosophy	Miami-Dade Community College
Dr. Stephen Arce	UF	Environmental Engineering	University of Florida
Dr. Danielle Boaz	UM	Philosophy	University of North Carolina - Charlotte
Dr. Otonye Braide	UF	Chemistry	Gordon College (MA)
Dr. Cicely Brantley	FSU	Family Relations/Human Science	Tallahassee Community College
Dr. Robin Brooks	UF	Literature/English	University of Pittsburg
Dr. Megan E. Brown	UF	Natural Resource Management	University of Florida
Dr. Adrienne Celaya	UM	Sociology	Our Kids of Miami-Dade/Monroe, Inc.
Dr. Chandra Clark	FSU	English	Florida A&M University
Dr. Elizabeth Corsentino	FSU	Psychology	Vanderbilt-Veterans Affairs
Dr. Shihab Deiab	FAMU	Pharmaceutical Sciences	Florida A&M University
Dr. Cindy Ermus	FSU	History	University of Lethbridge
Dr. Cynthia Figgers	FAMU	Pharmacy	James A. Shanks Middle School (FL)
Dr. Amelia Gipson	FSU	Information Sciences	University of North Carolina - Chapel Hill
Dr. Mashunte Glass-Holmes	FAMU	Pharmaceutical Sciences	Florida A&M University
Dr. Don Graham	UCF	Computer Science	University of Central Florida
Dr. Sennai Habtes	USF	Marines Science	University of the Virgin Islands
Dr. Stacey Hardin	UCF	Education	University of Central Florida
Dr. William Hardy	UF	Chemistry	Savannah River National Lab
Dr. Charles Harris	UCF	Modeling & Simulation	Inmarsat (FL)
Dr. Corliss Heath	USF	Anthropology	Health Resources Services Administration
Dr. Julieta Hernandez	FIU	Social Welfare	University of Miami
Dr. Yvette Holmes	FSU	Marketing	Alabama State University
Dr. Brenda Jasper	USF	Nursing	St. Petersburg College
Dr. Felicia Kaloydis	FIT	Industrial Organizational Behavior	Pivot Exit
Dr. David Lagomasino	FIU	Earth & Environment	Universities Space Research Association
Dr. Lindsey Lauderdale	UF	Mathematics	University of Texas - Tyler
Dr. Christopher Lorsche	UCF	Physics	Seminole State College of Florida
Dr. Elizabeth Lust	UCF	Psychology	Educational Testing Service & College of New Jersey
Dr. Chauntel McKenzie	USF	Nursing	University of South Florida
Dr. Vanessa Madrazo	FIU	Psychology	ASA College
Dr. Alan Meca	FIU	Psychology	Old Dominion University
Dr. Dalgis Mesa	FIU	Physics	Louisiana State University
Dr. Sean Mondesire	UCF	Computer Science	U.S. Army Research Lab
Dr. Thomas Moore	UF	Education	American Institute for Research
Dr. Miguel Morales	UF	Engineering	University of Florida
Dr. Cesar Moreira	UF	Agricultural & Biological Engineering	University of Florida
Dr. Nadine Nelson	USF	Medical Sciences	University of South Florida
Dr. Francisco Ortega	FIU	Computer Science	Florida International University
Dr. Enrique Ortiz	UCF	Electrical Engineering	Sighthound (FL)
Dr. Iris Patten	UF	Urban & Regional Planning	Geospatial Collaborative Consulting
Dr. Fernando Patterson	FIU	Business Administration	University of Texas - Pan American
Dr. Alisha Peterson	USF	Engineering Sciences	Intel (AZ)
Dr. Merlande Petit-Bois	USF	Education	Pinellas County Schools
Dr. Issa Ramirez	USF	Mechanical Engineering	Wright-Patterson Air Force Base
Dr. Vito Rebecca	USF	Cell and Molecular Biology	University of Pennsylvania Health Systems
Dr. Paul Robinson	UF	Materials Science & Engineering	University of Florida
Dr. Jennifer Rosado-Munoz	UF	Psychology	Nationwide Children's Hospital (OH)
Dr. Elizabeth Sanz	UCF	Industrial Organizational Behavior	University of Central Florida
Dr. Cinthia Satornino	FSU	Business Administration	University of Connecticut
Dr. LeTania Severe	FIU	Sociology	King County Executive's Office
Dr. Pierre St. Juste	UF	Computer Engineering	Google
Dr. Adrienne Stephenson	FAMU	Pharmaceutical Sciences	Florida State University
Dr. Donovan Thompson	UF	Physics	Akzo Nobel
Dr. Bianca Trejo	FIT	Industrial Organizational Behavior	Walt Disney Co.
Dr. David Walker	UF	Mechanical Engineering	Rehobith Innovations Company (FL)
Dr. Benetta Wholuba	FSU	School Psychology	University of Central Florida
2015			
Dr. Maryam Agharahimi	FAMU	Pharmaceutical Science	Florida Department of Agriculture
Dr. Olukemi Akintewe	USF	Chemical Engineering	Boston University
Dr. Toya Albury-Warren	UCF	Biomedical Sciences	University of Central Florida
Dr. Jacqueline Amorim	UF	English	Florida International University
Dr. Veronica Aponte-Morales	USF	Engineering Sciences	EPA, Office of Water Division

Name	Institution	Discipline	Place of Employment
2015 (Cont.)			
Dr. Edikan Archibong	USF	Chemical & BME	University of North Carolina
Dr. Corey Baker	UF	Electrical Engineering	University of Kentucky
Dr. Darren Beneby	FSU	Criminology	North Carolina Central University
Dr. Michael Brandon	UF	History	North Carolina School for Science & Math
Dr. Natasha Burke	USF	Clinical Psychology	Shriver National Institute of Child Health Dev.
Dr. Jean Calderon	UCF	Chemistry	Keiser University
Dr. Vinicio Carias	USF	Chemical Engineering	Sandia National Laboratories
Dr. June Carrington	UF	Anthropology	University of Miami
Dr. Danielle Cooper	UF	Criminology	University of New Haven
Dr. Ruan Cox, Jr.	USF	Medical Sciences	Moffitt Cancer Center (FL)
Dr. Miguel Cruz	FIU	Environmental Engineering	U.S. Centers for Disease Control and Prevention
Dr. Andrea Cumming	UCF	Civil & Environmental Engineering	Private Consulting Firm (FL)
Dr. Jennifer Dames	UCF	Science Education	Brevard Public School - Science Coach (FL)
Dr. Brittany O. Derenoncourt	UF	Anthropology	Healthesystems
Dr. Monica Duran	UM	Spanish Literature	University of Miami
Dr. Anya Edun	FIU	Psychology	Dart Enterprises
Dr. Marcus Elam	FSU	Food Science	California State Polytechnic (CA)
Dr. Mutasim Elsheikh	USF	Mechanical Engineering	Self-employed
Dr. Elaine Espanola	FIU	Psychology	Florida International University
Dr. Desiree Espinal	FIU	Psychology	Florida International University
Dr. Ange Marie Fievre	FIU	Electrical Engineering	Florida International University
Dr. Veronica Fortino	UM	Engineering	Nova Southeastern University
Dr. Rony Francois	UF	Biology	University of Florida
Dr. Amaris Genemaras	UM	Engineering	University of Miami
Dr. Janine Gilkes	UF	Molecular Biology	University of Florida
Dr. Vernita Glenn-White	UCF	Math Education	Stetson University
Dr. Gary Gramajo	FSU	Statistics	Chick-fil-A
Dr. Felicia Griffin	FSU	Statistics	U.S. Food and Drug Administration
Dr. Elizabeth Hamilton	UF	Humanities/Art History	Gordon State College
Dr. Charles Harris	UCF	Electrical Engineering	Florida Virtual School
Dr. Aleshia Hayes	UCF	Electrical Engineering	Indiana University-Purdue University
Dr. Victor Huaymave	UCF	Electrical Engineering	Embry-Riddle University (FL)
Dr. Timothy Jones	FSU	Business	Xavier University (OH)
Dr. Amber Kinsey	FSU	Nutrition, Food, & Exercise Science	University of Alabama - Birmingham
Dr. Danielle Lespinasse	UF	Psychology	Michael J. Crescenz VA Medical Center
Dr. Camee Maddox-Wingfield	UF	Anthropology	University of Florida
Dr. Jordany Maignan	USF	Chemistry	Ion Labs
Dr. Joseph McGuire	USF	Psychology	University of South Florida
Dr. Sharde McNeil-Smith	FSU	Family & Child Sciences	Florida State University
Dr. Maritza Muniz-Maisonet	USF	Chemical & BME	University of South Florida
Dr. Liv Newman	UF	Psychology	Loyola University - New Orleans
Dr. Lacy Olson	FSU	Psychology	San Diego VA Hospital
Dr. Laurin Pacheco	UM	Biochemistry & Molecular Biology	University of Miami
Dr. Janine Parker	UF	Agriculture Education	North Carolina Department of Commerce
Dr. Evans Pemba	UF	Health Sciences	University of Florida
Dr. Michael J. Perez	UF	Physics	Valencia State College
Dr. Rebeca Perren	UCF	Marketing	California State University - San Marcos
Dr. Brandon Reese	FSU	Mechanical Engineering	Geico Decision Science & Transformation
Dr. Mark Santana	USF	Environmental Engineering	Catalan Water Research Institute - (Spain)
Dr. Rolando Santos	UM	Marine Science	University of Miami
Dr. Jaired Tate	UF	Chemistry	University of Florida
Dr. Phaedra Thomas	USF	Public Health	University of South Florida
Dr. Danielle Tolson	UF	Criminology	University of New Haven
Dr. Juan Torres	UF	Mathematics	University of Florida
Dr. Denise Vidot	UM	Epidemiology	University of Miami
Dr. Sachel Villafane Garcia	USF	Chemistry	California State University
Dr. Vonetta Williams	USF	Public Health	Moffitt Cancer Center (FL)
Dr. Laurent Yamen	FIU	Electrical Engineering	Air Force Research Lab
2016			
Dr. Abenaa Acheampong-Jones	UF	Public Health	Johns Hopkins University
Dr. Katherine Alva-Barko	UF	Education - Bilingual Education	College of William & Mary (VA)
Dr. Sidney Anderson	FSU	Business Administration	Texas State University
Dr. Shetay Ashford	USF	Education	Texas State University
Dr. Ali Bustamante	UM	International Studies	University of Miami
Dr. Nicole Carr	UM	English	SUNY - Cortland Campus (NY)

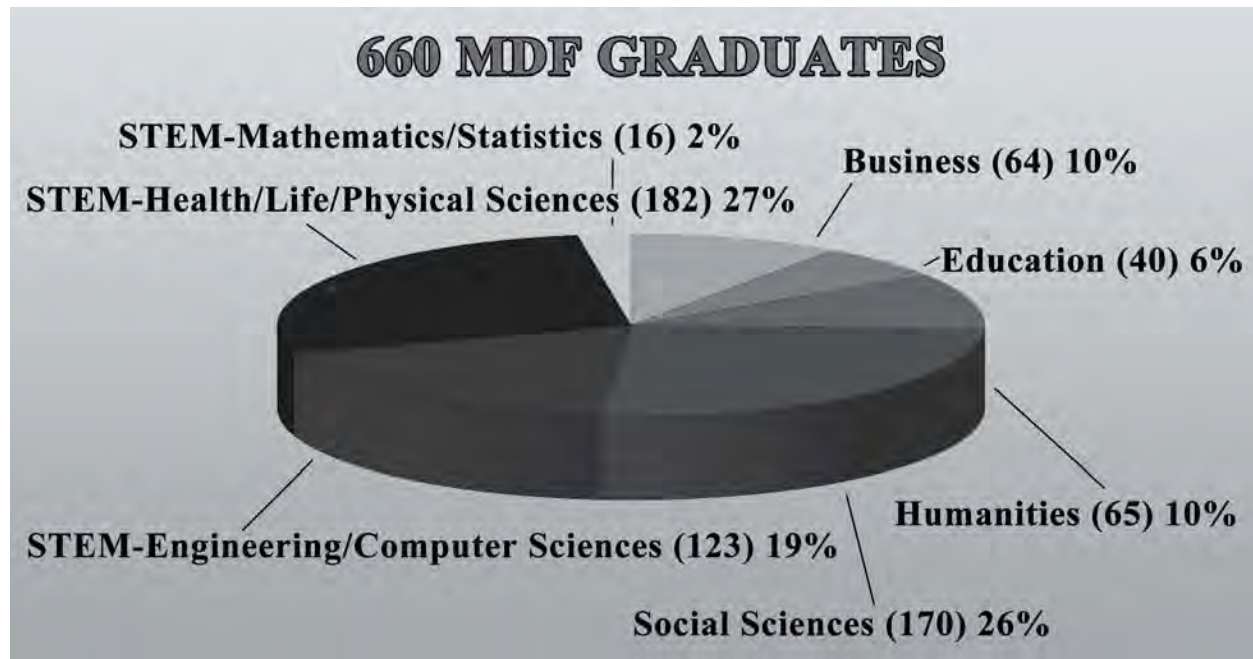
Name	Institution	Discipline	Place of Employment
2016 (Cont.)			
Dr. Pablo Cornejo-Warner	USF	Environmental Engineering	California State University
Dr. Michael Cross	USF	Physics	University of South Florida - Honors College
Dr. Yolanda Daza	USF	Biomedical Engineering	Intel Corporation
Dr. Debbie Devine	USF	Nursing	University of South Florida
Dr. Jason Downing	FIU	Biology	Fairchild Tropical Botanic Gardens (FL)
Dr. Ransford Edwards	FIU	Political Science	Florida International University
Dr. Kevin Elliott	FSU	Neuroscience	Florida State University
Dr. Dana Farrell	FIU	Public Health	Florida International University
Dr. Ophelia George	USF	Geophysics	University of South Florida
Dr. Jevay Grooms	UF	Economics	University of Washington (WA)
Dr. Marian Hardwick	USF	Nursing	Self-employed
Dr. Oscar Harvin	FAU	Business Administration	Sam Houston State University
Dr. Nia Haynes	UF	Wildlife Ecology	FL Fish & Wildlife Commission & Univ. of Florida
Dr. Kiar Holland	FIU	Electrical Engineering	Florida International University
Dr. Justin Hosbey	UF	Anthropology	University of Maryland - College Park
Dr. Lora Rose Hunter	UF	Anthropology	United States Army, Medical Service Corps
Dr. Chioke l'Anson	USF	Philosophy	University of South Florida
Dr. Sanaa Jaman	UF	Environmental Engineering	Self-employed
Dr. Rosalyn Johnson	UF	Ecology	University of Florida
Dr. Wendell Johnson	FSU	History	Florida State University
Dr. Jared Jones	UF	Engineering	Appttronik Systems, Inc.
Dr. Tim Jones	FSU	Business Administration/Finance	Xavier University (OH)
Dr. Nicholas Kasdaglis	FIT	Human Factors	MITRE Corporation (DC)
Dr. Michael Killey	FAU	Business	University of Michigan
Dr. Natalie King	UF	Education	Georgia State University
Dr. Natalie Leblanc	UM	Nursing	University of Rochester
Dr. Sharon Lebron Gonzalez	UF	Biomedical Engineering	University of Florida
Dr. Brittany Lee-McMullen	UF	Biochemistry	Stanford University
Dr. Devin Lewis	UF	Food Science	University of Florida
Dr. Chanda Littles	UF	Biology	Oak Ridge Institute for Science and Education
Dr. Susana Lopez	USF	Chemistry	University of South Florida
Dr. Felix Lorenzo	UF	Public Health	U.S. Dept. Health & Human Services (MD)
Dr. Marcia McNutt-Tan	UM	Psychology	Northwestern University
Dr. Sarah Mena	UF	Chemical Engineering	University of Michigan
Dr. Nia Morales	UF	Ecology	University of Florida
Dr. Jasmine Oliver	USF	Physics	University of Florida Health Cancer Center
Dr. Courtney Owens	UF	Agriculture Education	Kentucky State University
Dr. Dudith Pierre-Victor	FIU	Epidemiology	National Cancer Institute (MD)
Dr. Javier Rivera	UCF	Modeling & Simulation	University of Central Florida
Dr. Jodonnis Rodriguez	FIU	Business Administration	Eastern Michigan State University
Dr. Tammy Sanders	FIU	Curriculum & Instruction	Florida International University
Dr. Caroline Silva	FSU	Psychology	University of Rochester
Dr. Maisha Standifer	USF	Anthropology	U.S. Department of Veterans Affairs
Dr. Jeremy Townsend	UCF	Human Performance	University of Central Florida
Dr. Ofonime Udofot	FAMU	Pharmaceutical Science	University of Iowa
Dr. Candice Ulmer	UF	Chemistry	Centers for Disease Control and Prevention
Dr. Felicia Williams	FAMU	Education	Florida A&M University
Dr. Lenzi Williams	FSU	Chemistry	University of North Carolina
Dr. Rhonda Williams	UF	Mathematics Education	Region 10 Education Service Center
Dr. Tanika Williamson	USF	Chemical/Biomedical Engineering	University of South Florida
2017			
Dr. Marissa Alert	UM	Psychology	Johns Hopkins Medicine
Dr. Christopher Alexander	UF	Chemical Engineering	Sandia National Laboratories
Dr. Jeffrey Anderson	FSU	Business	California State University - Los Angeles
Dr. Jacob Atem	UF	Public Health	Southern Sudan Healthcare Organization
Dr. Tomia Austin	FAMU	Pharmaceutical Science	As One Foundation
Dr. Danisha Baker	FSU	Statistics	Florida State University
Dr. Dawnette Banks	FSU	Education	Dreamcast Educational Consulting
Dr. Teresa Benitez-Gregory	UF	Engineering	University of Florida
Dr. Sherman Benjamin	FSU	Physics	National High Magnetic Lab
Dr. Yonatan Binyam	FSU	Humanities	Coastal Carolina University
Dr. Nathalia Borden	FSU	Political Science	Florida State University
Dr. Natalia Borrego	UM	Ecology	University of Miami
Dr. Cherishe Brown	FAMU	Pharmacy	Florida A&M University
Dr. Lecia Brown	USF	Neuroscience	GlaxoSmithKline Vaccines



Name	Institution	Discipline	Place of Employment
2017 (Cont.)			
Dr. Eartha Butler	FAMU	Public Health	Florida A&M University
Dr. Claudia Cardona	FIU	Civil & Environmental Engineering	Florida International University
Dr. Mia Carey	UF	Anthropology	National Park Service (DC)
Dr. Ashley Carter	FSU	Food Science	Florida State University
Dr. Alexander Castro	UM	Medical Sciences	University of Miami
Dr. Jesus Chavarria	FSU	Psychology	University of Chicago
Dr. Edward Clark, II	FAMU	Public Health	Florida Department of Health
Dr. Teresa Collins	UF	Medical Sciences	University of Florida
Dr. Justine Connolly	USF	Psychology	District School Board of Pasco County
Dr. Phebian Davis	FAU	Business	Clemson University
Dr. Justin Dunnivant	UF	Anthropology	University of California - Santa Cruz
Dr. Natalie Escobio Bustillo	UM	Psychology	University of Miami
Dr. Diego Esparza-Duran	UF	Psychology	Veterans Affairs Loma Linda Healthcare System
Dr. Vanquilla Shellman Francis	FIU	Chemistry	Miami Dade Police Department
Dr. Yolanda Franklin	FSU	English/Poetry	Florida State University
Dr. Vladimir Geneus	FSU	Statistics	Eli Lilly and Company
Dr. Adrienne George	USF	Marine Science	University of South Florida
Dr. Andree George	UF	Biology	University of Florida
Dr. Laura Gonzalez	USF	Engineering	University of South Florida
Dr. Michael Grady	USF	Engineering	University of South Florida
Dr. Justin Hall	FAU	Business	Jacksonville University
Dr. Shaywanna Harris	UCF	Education	Texas State University
Dr. Neverson-Anyjah Heatley, III	UF	Education	University of Florida
Dr. Elizabeth Henderson	FAMU	Pharmacy	Florida A&M University
Dr. Tanisha Hill-Jarrett	UF	Psychology	University of Michigan
Dr. Cresean Hughes	FSU	Criminology	Florida State University
Dr. Shalay Jackson	USF	Public Health	St. Leo University
Dr. Micah Johnson	UF	Sociology	University of Florida
Dr. Tamina Johnson	USF	Engineering	Braxton Daryl Johnson Foundation
Dr. Samantha Jones	FAMU	Basic Sciences	Florida A&M University
Dr. Melvin McCray	UF	Engineering	University of Florida
Dr. Adonis McQueen	USF	Medical Sciences	University of South Florida
Dr. Jorge Medina	UF	Chemistry	University of Florida
Dr. Giorvanni Merilis	UFS	Public Health	CDC National Center for Injury Prevention & Control
Dr. Dagmara Montfort	USF	Chemical & BME	University of South Florida
Dr. Lorraine Monteagut	USF	Mass Communications	University of South Florida
Dr. Alexis Mootoo	USF	Political Science	University of South Florida
Dr. Veronica Negron Perez	UF	Food Science	Virginia Polytechnic Institute & State University
Dr. Brandon Nzekwe	USF	Education	University of South Florida
Dr. Alberto Ortega	UF	Economics	Whitman College
Dr. Esther Piervil	UF	Public Health	University of Florida
Dr. Krystal Pree	FAMU	Environmental Toxicology	Florida A&M University
Dr. Luis M. Rodrigues	UCF	Engineering	University of Central Florida
Dr. Elizabeth Rojas	USF	Psychology	University of South Florida
Dr. Marcia Saintil	FSU	Psychology	Florida State University
Dr. Olufisayo Salako	FAMU	Pharmaceutical Science	U.S. Department of Defense
Dr. Shenae Samuels	UF	Public Health	Texas Tech University Health Sciences Center
Dr. Felecia Theune	UM	Sociology	University of Miami
Dr. Victor Velez	UCF	Engineering	University of Central Florida
Dr. Marcia Washington	FSU	Psychology	Florida State University
Dr. Ira Wheaton	FSU	Mathematics	Morehouse College
Dr. Karessa White	UF	Communication Sciences & Disorders	University of Florida
Dr. Kia Williams	USF	Chemistry	Metrohm USA
2018			
Dr. Makini Cobourne-Duval	FAMU	Pharmaceutical Science	U.S. Food and Drug Administration
Dr. Alejandro Diaz	FIU	Psychology	Florida International University
Dr. John Gibson	FIU	Engineering	Air Force Research Lab
Dr. Earnest Hansley	USF	Computer Science	University of South Florida
Dr. Jana Miles	FAMU	Pharmaceutical Science	Florida A&M University
Dr. Monique Ositelu	FSU	Education	Florida State University
Dr. Derrick Pollock	FSU	Education	Florida State University
Dr. Hadassah St. Hubert	UM	History	University of Miami
Dr. Jonathan Torres	UCF	Engineering	University of Central Florida
Dr. Chante Washington-Oates	UM	Nursing	University of Miami
Dr. Aurelia Whitmore	FAMU	Pharmaceutical Science	Omnicom Health Group
Dr. Alisa Zujovic	USF	Education	Hillsborough Community College



## MCKNIGHT DOCTORAL GRADUATE STATISTICS



## MCKNIGHT DOCTORAL GRADUATE STATISTICS

Five hundred twenty-five (584) graduates have received Ph.D. degrees from public institutions.

Institutions	Females	Males	Combined (Females & Males)
FAMU	30	16	46
FAU	5	3	8
FIU	25	16	41
FSU	87	53	140
UCF	25	25	50
UF	109	66	175
USF	81	43	124
<b>TOTAL</b>	<b>362</b>	<b>222</b>	<b>584</b>

Sixty-seven (76) graduates have received Ph.D. degrees from private institutions.

Institutions	Females	Males	Combined (Females & Males)
Barry	4	1	5
FIT	5	3	8
UM	49	14	63
<b>TOTAL</b>	<b>58</b>	<b>18</b>	<b>76</b>

## MDF PARTICIPATING UNIVERSITIES ~ 1984-Present

Public & Private Universities	Fellowships Awarded to Date	Graduates to Date	Matriculating Fellows	Current Retention Rate
Barry University	6	5	0	83%
Florida A&M University	81	46	29	93%
Florida Atlantic University	19	8	5	68%
Florida Institute of Technology	11	8	0	73%
Florida International University	89	41	40	91%
Florida State University	252	140	74	85%
University of Central Florida	102	50	41	89%
University of Florida	356	175	111	80%
University of Miami	115	63	34	84%
University of South Florida	184	124	48	93%
<b>TOTALS:</b>	<b>1215</b>	<b>660</b>	<b>382</b>	<b>86%</b>

Keep your information up  
to date in the MDF Directory.

Visit [www.fefonline.org/dir](http://www.fefonline.org/dir)

## BOARD OF DIRECTORS

**Dr. Robert L. Nixon**  
Board Chair  
Associate Professor Emeritus (Retired)  
*University of South Florida*  
Tampa, FL

**Dr. Sylvia W. Thomas**  
Board Secretary/Treasurer  
Associate Professor, Dept. of  
Electrical Engineering  
*University of South Florida*  
Tampa, FL

**Dr. Castell V. Bryant**  
President (Retired)  
*Florida Memorial University*  
Miami Gardens, FL

**Mr. B. John Frady**  
Investment Consultant  
*CapTrust Advisors*  
Tampa, FL

**Dr. Dovie J. Gamble**  
Retired Professor  
*University of Florida*  
Gainesville, FL

**Dr. Jaffus Hardrick**  
Vice Provost for Access & Success  
*Florida International University*  
Miami, FL

**Ms. Carolyn Lawson**  
President & Founder  
*Chameleon Custom Solutions*  
Tampa, FL

**Dr. Earl Lennard**  
Superintendent (Retired)  
*Hillsborough County Public Schools*  
Riverview, FL

**Dr. Shandale Terrell**  
Dean of Students/Adjunct Professor  
*Crystal Lake Middle School/  
Polk State College*  
Lakeland, FL

**Mr. Philippe L. Villain**  
Senior Vice President  
*Compass Group*  
Los Angeles, CA

---

## STAFF

**Dr. Lawrence Morehouse**  
President and CEO  
M.A., Ph.D., Cornell University  
B.A., Southern University

**Lyra Logan, Esq.**  
Executive Vice President and General Counsel  
J.D., Harvard Law School  
B.A., Fisk University

**Mr. Charles Jackson III**  
MDF Program Manager  
B.A., M.P.A., University of South Florida

**Ms. Monica Montes**  
Executive Assistant/Graphic Designer  
A.A., Florida Metropolitan University

**Ms. Phyllis Reddick**  
Executive Assistant/Communication Specialist  
B.A., Howard University

**Ms. Katelyn Sengsoulya**  
Administrative Assistant  
A.A., Hillsborough Community College

**Mo Waineo, CPA**  
Finance Manager  
B.S., MACC, University of South Florida



**Florida Education Fund**

201 East Kennedy Boulevard, Suite 1525  
Tampa, Florida 33602

Phone: 813/272-2772 Fax: 813/272-2784

Website: [www.fefonline.org](http://www.fefonline.org)

*Cover Design by Naima Reddick*

# CLASS OF 2018-2019

## Business

**Lindsay Fields**  
University of South Florida  
*Economics*

**Emanuel Garcia Munoz**  
University of Florida  
*Economics*

**Michael Zarate**  
Florida International University  
*Economics*

## Education

**Mario Lewis**  
Florida International University  
*Higher Education Administration*

**Gerson Sanchez**  
Florida International University  
*Higher Education*

**Dionne Wilson**  
Florida State University  
*Curriculum & Instruction in Science Education*

## Social Sciences

**Erica Anderson**  
University of South Florida  
*Behavioral and Community Sciences*

**James Brown**  
Florida State University  
*Neuroscience*

**Jasmine Haynes**  
University of Central Florida  
*Public Affairs & Social Work*

**Roxanne Lawrence**  
University of South Florida  
*Industrial and Organizational Psychology*

**Mario Cavani Quevedo**  
University of South Florida  
*Government*

**Valeria Rigobon**  
Florida State University  
*Developmental Psychology*

**LaRaven Temoney**  
University of Florida  
*American Politics & Public Policy*

**Janae Thomas**  
University of South Florida  
*Government*

**Umelo Ugwoaba**  
University of Florida  
*Clinical and Health Psychology*

## STEM-Engineering/ Computer Sciences

**Michael Adeyosoye**  
Florida International University  
*Electrical & Computer Engineering*

## STEM-Engineering/ Computer Sciences

**Brandon Applewhite**  
University of Miami  
*Biomedical Engineering*

**Antonio Diaz**  
University of Florida  
*Mechanical and Aerospace Engineering*

**Pedro Espina**  
Florida International University  
*Computer Science*

**Eric Fonseca**  
University of Florida  
*Materials Science & Engineering*

**Brittany Gonzalez**  
Florida International University  
*Biomedical Engineering*

**Joseph Jefferson**  
University of Florida  
*Civil/Coastal Engineering*

**Keith McNamara**  
University of Miami  
*Human Centered Computing*

**David Perez**  
Florida A&M University  
*Civil Engineering*

**Rodrigo Ramon**  
Florida International University  
*Electrical & Computer Engineering*

**William Sims**  
University of Florida  
*Computer Science*

**Dieff Vital**  
Florida International University  
*Electrical Engineering*

## STEM-Health/Life/ Physical Sciences

**Alexander Acosta**  
Florida International University  
*Chemistry*

**Trenton Aguilar**  
University of Florida  
*Fisheries and Aquatic Sciences*

**Johann Alvarez**  
University of Florida  
*Physics*

**Brandi Cook**  
University of South Florida  
*Chemistry*

**Ke Aira Davis**  
University of Florida  
*Molecular Microbiology*

**Nella Delva**  
Florida State University  
*Biomedical Science*

## STEM-Health/Life/ Physical Sciences

**Shante Earle**  
Florida International University  
*Dietetics & Nutrition*

**Leah Davis Ewart**  
University of Miami  
*Prevention Science & Community Health*

**Tienna Fenton**  
Florida International University  
*Public Health*

**Vidia Gokool**  
Florida International University  
*Chemistry*

**Savannah Hartman**  
University of South Florida  
*Marine Science*

**Alejandro Hernandez**  
Florida International University  
*Chemistry*

**Christopher Kay**  
University of Miami  
*Philosophy of Nursing*

**Motomori Lewis**  
University of Florida  
*Pharmaceutical Sciences*

**Heidy Medina**  
University of Miami  
*Epidemiology*

**Nikema Peterson**  
Florida A&M University  
*Pharmaceutical Sciences*

**Darlene Ramos**  
University of Central Florida  
*Biomedical Sciences*

**Robin Stubbs**  
Florida International University  
*Biology*

**Michelle Tall**  
University of Central Florida  
*Nursing*

**Nicole Fernandez Tejero**  
Florida International University  
*Chemistry*

**Caroline Velez**  
University of Miami  
*Chemistry*

## STEM-Mathematics/ Statistics

**Herman Autore**  
Florida State University  
*Statistics*